

LEA Name : Plum Borough SD  
Address : 900 Elicker Road  
Plum , PA 15239

County : Allegheny  
AUN Number : 103027503  
LEA Type : SD

## Annual Financial Report Accuracy Certification Statement

For Fiscal Year Ending  
**6/30/2020**

Pennsylvania Department of Education  
&  
Office of Comptroller Operations

PDE-2056: Intermediate Unit  
PDE-2057: School District, AVTS/CTC, Charter School,  
and Special Program Jointure

**CERTIFICATION: By signing this page I agree that the electronic data submitted is a complete and accurate statement of the financial operations and status of the local education agency for the fiscal year. It has been prepared in accordance with generally accepted accounting principles and established Commonwealth of PA reporting guidelines.**



Chief School Administrator Signature

11/04/2020

Date



Board Secretary Signature

11/04/2020

Date

John Zahorchak

Contact Person

(412)798-6356

Ext :

Contact Person Telephone Number

zahorchakj@pbsd.net

Contact Person E-mail Address

Contact Person Fax Number

**Audit Certification**  
**Annual Financial Report:**  
For Fiscal Year Ending **6/30/2020**  
**(Pursuant to PA School Code Section 218(b))**

LEA Name : Plum Borough SD  
AUN Number : 103027503  
County : Allegheny

<b>Audit Certification Due:</b> 12/31/2020
---

**This certification is applicable to the Annual Financial Report data submitted through the Consolidated Financial Reporting System (CFRS).**

CERTIFICATION: By signing this page I agree that the financial statements of the school have been properly audited as noted above pursuant to Article XXIV, and in the auditor's professional opinion, the Annual Financial Report (PDE-2057) submitted through CFRS is materially consistent with the audited financial statements.

Chief School Administrator

  
Signature

11/04/2020  
Date

Board Secretary

  
Signature

11/04/2020  
Date

John Zahorchak  
Contact Person

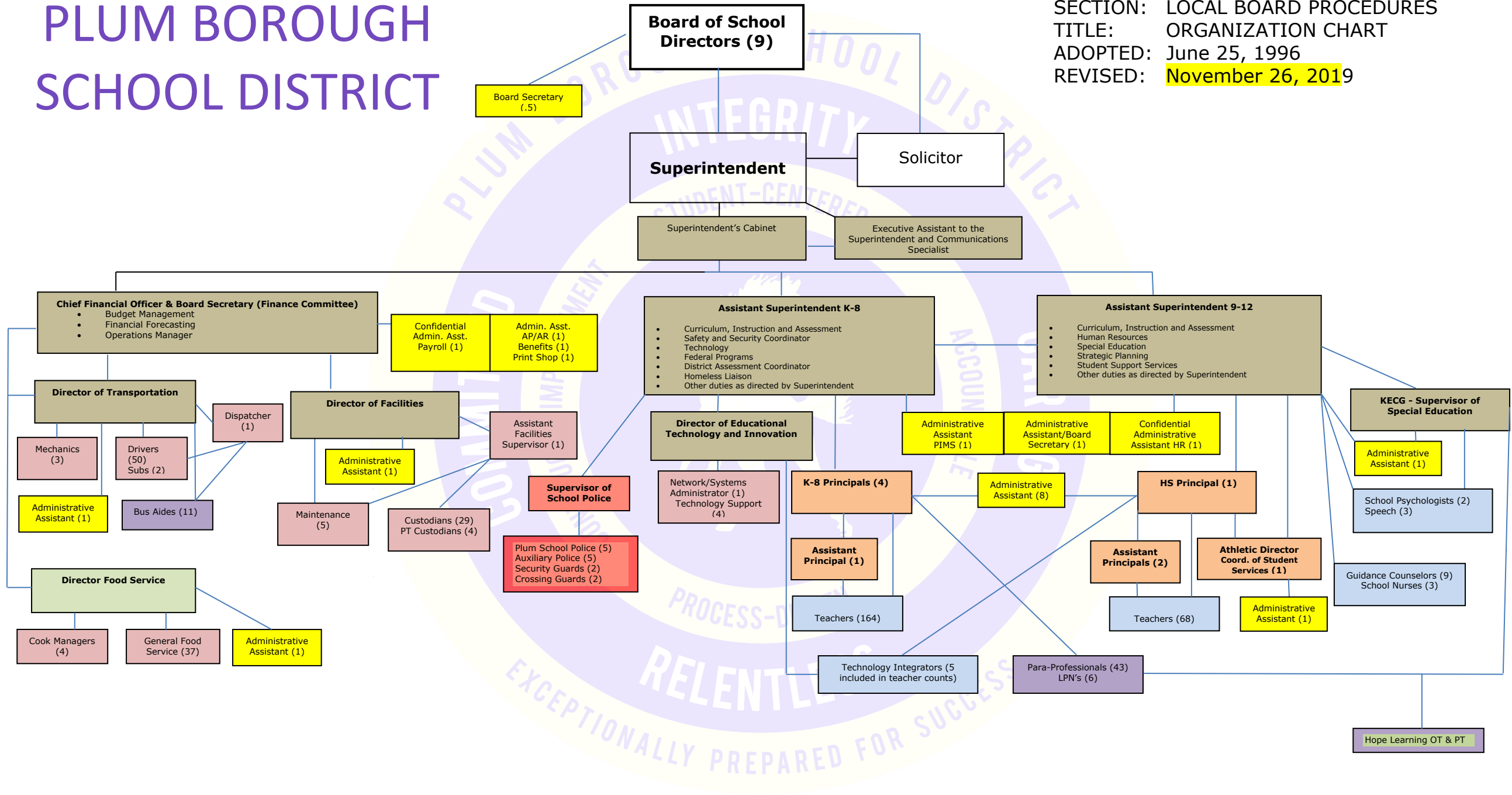
zahorchakj@pbsd.net  
Contact Person E-mail Address

(412)798-6356      Ext :  
Contact Person Telephone Number

\_\_\_\_\_  
Contact Person Fax Number

# PLUM BOROUGH SCHOOL DISTRICT

SECTION: LOCAL BOARD PROCEDURES  
TITLE: ORGANIZATION CHART  
ADOPTED: June 25, 1996  
REVISED: November 26, 2019





Book	Policy Manual
Section	600 Finances
Title	Capitalization
Code	622
Status	Active
Adopted	October 28, 2003

### **Purpose**

The Board of School Directors recognizes the need to implement the required accounting and financial reporting standards promulgated by the Governmental Accounting Standards Board (GASB). GASB Statement 34 was issued to provide new and additional information to the diverse users of district financial statements. In addition to the information contained in previous financial reporting, GASB 34 will now provide information in a highly aggregated manner looking at the long-term financial health of the school district. This new information will require school districts to account for capital assets in a manner different than previously recorded. The intent is to provide an additional set of entity-wide financial statements more similar to the private sector.

The primary objectives of GASB 34 include:

1. New entity-wide financial statements reflecting the overall financial position of the district.
2. Long-term focus for school district activities.
3. Narrative overview and analysis.
4. Information on major funds.
5. Expanded budgetary reporting.

It is important to note that the methods, calculations, and procedures for determining the budgetary process of the school district will not be affected by the implementation of the new standards. The information contained in previous financial statements will largely be in the same format.

### **Authority**

Governmental Accounting Standards Board Statement 34.

### **Delegation of Responsibility**

The Board of School Directors delegates to the Director of Business Affairs, in cooperation with the local independent auditor, the responsibility to coordinate the compilation and preparation of all information necessary to implement this policy in accordance with district administrative procedures.

### **Guidelines**

### Capital Assets

A capitalized asset shall be any asset acquired by donation or purchase that has a useful life of longer than one (1) year or extends the life of another capitalized asset or increases its value and meets a specific dollar threshold. At management's discretion, and in conjunction with the local auditor, capital assets purchased with long-term debt may be capitalized regardless of the specific dollar threshold for the type of class of asset acquired.

### Value of Assets

All capitalized assets shall be recorded at historical cost at acquisition date or estimated cost if acquired prior to the date of the initial inventory. Any donated capital asset shall be recorded at the date of donation using the fair market value of the item at that date.

### Depreciation

Depreciation shall be based on the straight-line method of depreciation over the estimated useful life of each depreciable asset or group of assets. Periodically, management shall evaluate the estimated useful life of each depreciable asset to determine if revision of such estimate is required.

### Dollar Threshold

A dollar threshold for each asset shall be set at an appropriate level. Management should periodically review these levels with assistance from the local independent auditor and may any modifications necessary.

[622-Attach.pdf \(113 KB\)](#)

<u>Val Number</u>	<u>Description</u>	<u>Justification</u>
16230	<p>REP Fund 51 – Net Position - Beginning of Fiscal Year must equal Prior Year AFR, Net Position - End of Year. Justifications to this error must fully explain the situation that prompted a fund balance restatement. "Auditor Adjustment" is not a sufficient justification.</p> <p>REP Fund 51 – Net Position - Beginning of Fiscal Year: \$-1,925,266.00            REP Fund 51, Prior Year AFR, Net Position - End of Year: \$-1,923,989.00</p>	<p>The \$1,277 difference was the compensated absence entry from last year. It was coded to 0141 but it needs to be to fund balance to agree the PY balance to the audit.</p>
50270	<p>SOIN: Accreted Interest Data was not entered for a Capital Appreciation Bond (General Obligation Bond - CAB or Authority Building Obligation - CAB). Use the SOIN data entry screen to correct or enter a justification.</p>	<p>The is accurate, these bonds should not have accreted interest.</p>
50450	<p>SESS - 2350 Legal and Accounting Services: SESS Schedule amounts for Special Education vary from prior year by 40% or more. Correct the data or enter a justification.</p> <p>SESS Schedule 2350: \$26,053.01            Prior Year SESS Schedule 2350: \$54,043.28</p>	<p>Amount is verified, District incurred less legal expenses in 2019-20</p>

Amounts Expressed in Whole Dollars

	<u>General Fund</u> <u>(10)</u>	<u>Student Sponsored</u> <u>Activity Fund</u> <u>(21)</u>	<u>Public Purpose Trust</u> <u>(27)</u>	<u>Other Compt Approved</u> <u>(28)</u>	<u>Athletic / Activity</u> <u>(29)</u>
<b>Assets And Deferred Outflows Of Resources</b>					
<b>Assets</b>					
0100 Cash and Cash Equivalents	10,120,069				
0110 Investments	925,198				
0120 Taxes Receivable	4,096,256				
0130 Due From Other Funds	1,002,642				
0141 Due From Other Governments	111,756				
0142 State Revenue Receivable	2,547,801				
0143 Federal Revenue Receivable	1,838,401				
0145 Other Intergovernmental Revenue Receivable					
0146 Due from Primary Government					
0147 Due from Component Unit					
0150 Other Receivables	89,535				
0170 Inventories					
0180 Prepaid Expenses (Expenditures)	443,564				
0190 Other Current Assets					
<b>Total Assets</b>	<b>\$21,175,222</b>				
0910 Deferred Outflows of Resources					
<b>Total Assets And Deferred Outflows Of Resources</b>	<b>\$21,175,222</b>				

Amounts Expressed in Whole Dollars

<u>Capital Reserve (690.</u>	<u>Capital Reserve (1431)</u>	<u>Other Capital Projects</u>	<u>Debt Service</u>	<u>Permanent</u>
<u>1850)</u>	<u>(32)</u>	<u>Fund</u>	<u>(40)</u>	<u>(90)</u>
<u>(31)</u>		<u>(39)</u>		

**Assets And Deferred Outflows Of Resources**

**Assets**

0100 Cash and Cash Equivalents	3,627,538
0110 Investments	2,225,000
0120 Taxes Receivable	
0130 Due From Other Funds	
0141 Due From Other Governments	
0142 State Revenue Receivable	
0143 Federal Revenue Receivable	
0145 Other Intergovernmental Revenue Receivable	
0146 Due from Primary Government	
0147 Due from Component Unit	
0150 Other Receivables	
0170 Inventories	
0180 Prepaid Expenses (Expenditures)	
0190 Other Current Assets	

<b>Total Assets</b>	<b>\$5,852,538</b>
---------------------	--------------------

0910 Deferred Outflows of Resources

<b>Total Assets And Deferred Outflows Of Resources</b>	<b>\$5,852,538</b>
--	--------------------



Amounts Expressed in Whole Dollars

**Total Governmental Funds**

**Assets And Deferred Outflows Of Resources**

<b>Assets</b>	
0100 Cash and Cash Equivalents	13,747,607
0110 Investments	3,150,198
0120 Taxes Receivable	4,096,256
0130 Due From Other Funds	1,002,642
0141 Due From Other Governments	111,756
0142 State Revenue Receivable	2,547,801
0143 Federal Revenue Receivable	1,838,401
0145 Other Intergovernmental Revenue Receivable	
0146 Due from Primary Government	
0147 Due from Component Unit	
0150 Other Receivables	89,535
0170 Inventories	
0180 Prepaid Expenses (Expenditures)	443,564
0190 Other Current Assets	
<b>Total Assets</b>	<b>\$27,027,760</b>
0910 Deferred Outflows of Resources	
<b>Total Assets And Deferred Outflows Of Resources</b>	<b>\$27,027,760</b>

Amounts Expressed in Whole Dollars

	<u>General Fund</u> <u>(10)</u>	<u>Student Sponsored</u> <u>Activity Fund</u> <u>(21)</u>	<u>Public Purpose Trust</u> <u>(27)</u>	<u>Other Compt Approved</u> <u>(28)</u>	<u>Athletic / Activity</u> <u>(29)</u>
<b>Liabilities And Deferred Inflows Of Resources And Fund Balances</b>					
<b>Liabilities</b>					
0400 Due to Other Funds					
0411 Due to Other Governments					
0412 Due to Primary Government					
0413 Due to Component Unit					
0420 Accounts Payable	2,013,227				
0430 Contracts Payable					
0440 Current Portion of Long-Term Debt					
0450 Short-Term Payables					
0461 Accrued Salaries and Benefits	4,475,591				
0462 Payroll Deductions and Withholding	2,446,612				
0480 Unearned Revenues					
0490 Other Current Liabilities					
<b>Total Liabilities</b>	<b>\$8,935,430</b>				
0950 Deferred Inflows of Resources	3,400,068				
<b>Fund Balances</b>					
0810 Nonspendable Fund Balance	443,564				
0820 Restricted Fund Balance					
0830 Committed Fund Balance					
0840 Assigned Fund Balance	3,820,665				
0850 Unassigned Fund Balance	4,575,495				
<b>Total Fund Balances</b>	<b>\$8,839,724</b>				
<b>Total Liabilities, Deferred Inflows Of Resources And Fund Balances</b>	<b>\$21,175,222</b>				

Amounts Expressed in Whole Dollars	<u>Capital Reserve (690.</u> <u>1850</u> <u>(31)</u>	<u>Capital Reserve (1431)</u> <u>(32)</u>	<u>Other Capital Projects</u> <u>Fund</u> <u>(39)</u>	<u>Debt Service</u> <u>(40)</u>	<u>Permanent</u> <u>(90)</u>
<b>Liabilities And Deferred Inflows Of Resources And Fund Balances</b>					
<b>Liabilities</b>					
0400 Due to Other Funds			969,011		
0411 Due to Other Governments					
0412 Due to Primary Government					
0413 Due to Component Unit					
0420 Accounts Payable			404,653		
0430 Contracts Payable					
0440 Current Portion of Long-Term Debt					
0450 Short-Term Payables					
0461 Accrued Salaries and Benefits					
0462 Payroll Deductions and Withholding					
0480 Unearned Revenues					
0490 Other Current Liabilities					
<b>Total Liabilities</b>			<b>\$1,373,664</b>		
0950 Deferred Inflows of Resources					
<b>Fund Balances</b>					
0810 Nonspendable Fund Balance					
0820 Restricted Fund Balance			4,478,874		
0830 Committed Fund Balance					
0840 Assigned Fund Balance					
0850 Unassigned Fund Balance					
<b>Total Fund Balances</b>			<b>\$4,478,874</b>		
<b>Total Liabilities, Deferred Inflows Of Resources And Fund Balances</b>			<b>\$5,852,538</b>		

Amounts Expressed in Whole Dollars

**Total Governmental Funds**

**Liabilities And Deferred Inflows Of Resources And Fund Balances**

**Liabilities**

0400 Due to Other Funds	969,011
0411 Due to Other Governments	
0412 Due to Primary Government	
0413 Due to Component Unit	
0420 Accounts Payable	2,417,880
0430 Contracts Payable	
0440 Current Portion of Long-Term Debt	
0450 Short-Term Payables	
0461 Accrued Salaries and Benefits	4,475,591
0462 Payroll Deductions and Withholding	2,446,612
0480 Unearned Revenues	
0490 Other Current Liabilities	

**Total Liabilities \$10,309,094**

0950 Deferred Inflows of Resources	3,400,068
------------------------------------	-----------

**Fund Balances**

0810 Nonspendable Fund Balance	443,564
0820 Restricted Fund Balance	4,478,874
0830 Committed Fund Balance	
0840 Assigned Fund Balance	3,820,665
0850 Unassigned Fund Balance	4,575,495

**Total Fund Balances \$13,318,598**

**Total Liabilities, Deferred Inflows Of Resources And Fund Balances \$27,027,760**

Amounts Expressed in Whole Dollars	<u>General Fund</u> <u>(10)</u>	<u>Student Sponsored</u> <u>Activity Fund</u> <u>(21)</u>	<u>Public Purpose Trust</u> <u>(27)</u>	<u>Other Compt Approved</u> <u>(28)</u>	<u>Athletic / Activity</u> <u>(29)</u>
<b>Revenues</b>					
6000 Revenue from Local Sources	37,398,594				
7000 Revenue from State Sources	26,950,656				
8000 Revenue from Federal Sources	1,804,778				
<b>Total Revenues</b>	<b>\$66,154,028</b>				
<b>Expenditures</b>					
1000 Instruction	35,812,858				
2000 Support Services	16,780,518				
3000 Operation of Non-Instructional Services	1,326,496				
4000 Facilities Acquisition, Construction and Improvement Services					
5110 Debt Service	8,407,787				
5130 Refund of Prior Year Revenues / Receipts	5,198				
<b>Total Expenditures</b>	<b>\$62,332,857</b>				
<b>Excess (Deficiency) Of Revenues Over Expenditures</b>	<b>\$3,821,171</b>				
<b>Other Financing Sources (Uses)</b>					
9110 Face Value of Bonds Issued					
9120 Proceeds from Refunding of Bonds	48,565,000				
9130 Bond Premiums					
9200 Proceeds from Extended-Term Financing					
9300 Interfund Transfers - IN					
9400 Sale of or Compensation for Loss of Fixed Assets					
9710 Transfers from Component Units					
9720 Transfers from Primary Governments					
9910 Other Financing Sources Not Listed in the 9000 Series					
9990 Insurance Recoveries					
5120 Debt Service – Refunded Bonds	44,618,866				
5150 Bond Discounts					
5200 Interfund Transfers – Out	3,470,322				
5300 Transfers Out to Component Units/Primary Governments					
<b>Total Other Financing Sources (Uses)</b>	<b>\$475,812</b>				

Amounts Expressed in Whole Dollars	<u>Capital Reserve (690. 1850 (31)</u>	<u>Capital Reserve (1431) (32)</u>	<u>Other Capital Projects Fund (39)</u>	<u>Debt Service (40)</u>	<u>Permanent (90)</u>
<b>Revenues</b>					
6000 Revenue from Local Sources			60,425		
7000 Revenue from State Sources					
8000 Revenue from Federal Sources					
<b>Total Revenues</b>			<b>\$60,425</b>		
<b>Expenditures</b>					
1000 Instruction					
2000 Support Services			535,166		
3000 Operation of Non-Instructional Services			42,902		
4000 Facilities Acquisition, Construction and Improvement Services			1,806,091		
5110 Debt Service					
5130 Refund of Prior Year Revenues / Receipts					
<b>Total Expenditures</b>			<b>\$2,384,159</b>		
<b>Excess (Deficiency) Of Revenues Over Expenditures</b>			<b>(\$2,323,734)</b>		
<b>Other Financing Sources (Uses)</b>					
9110 Face Value of Bonds Issued					
9120 Proceeds from Refunding of Bonds					
9130 Bond Premiums					
9200 Proceeds from Extended-Term Financing					
9300 Interfund Transfers - IN			3,470,322		
9400 Sale of or Compensation for Loss of Fixed Assets					
9710 Transfers from Component Units					
9720 Transfers from Primary Governments					
9910 Other Financing Sources Not Listed in the 9000 Series					
9990 Insurance Recoveries					
5120 Debt Service – Refunded Bonds					
5150 Bond Discounts					
5200 Interfund Transfers – Out					
5300 Transfers Out to Component Units/Primary Governments					
<b>Total Other Financing Sources (Uses)</b>			<b>\$3,470,322</b>		

Amounts Expressed in Whole Dollars	<u>Total Governmental Funds</u>
<b>Revenues</b>	
6000 Revenue from Local Sources	37,459,019
7000 Revenue from State Sources	26,950,656
8000 Revenue from Federal Sources	1,804,778
<b>Total Revenues</b>	<b>\$66,214,453</b>
<b>Expenditures</b>	
1000 Instruction	35,812,858
2000 Support Services	17,315,684
3000 Operation of Non-Instructional Services	1,369,398
4000 Facilities Acquisition, Construction and Improvement Services	1,806,091
5110 Debt Service	8,407,787
5130 Refund of Prior Year Revenues / Receipts	5,198
<b>Total Expenditures</b>	<b>\$64,717,016</b>
<b>Excess (Deficiency) Of Revenues Over Expenditures</b>	<b>\$1,497,437</b>
<b>Other Financing Sources (Uses)</b>	
9110 Face Value of Bonds Issued	
9120 Proceeds from Refunding of Bonds	48,565,000
9130 Bond Premiums	
9200 Proceeds from Extended-Term Financing	
9300 Interfund Transfers - IN	3,470,322
9400 Sale of or Compensation for Loss of Fixed Assets	
9710 Transfers from Component Units	
9720 Transfers from Primary Governments	
9910 Other Financing Sources Not Listed in the 9000 Series	
9990 Insurance Recoveries	
5120 Debt Service – Refunded Bonds	44,618,866
5150 Bond Discounts	
5200 Interfund Transfers – Out	3,470,322
5300 Transfers Out to Component Units/Primary Governments	
<b>Total Other Financing Sources (Uses)</b>	<b>\$3,946,134</b>

Amounts Expressed in Whole Dollars	<u>General Fund</u> <u>(10)</u>	<u>Student Sponsored</u> <u>Activity Fund</u> <u>(21)</u>	<u>Public Purpose Trust</u> <u>(27)</u>	<u>Other Compt Approved</u> <u>(28)</u>	<u>Athletic / Activity</u> <u>(29)</u>
<b>Special And Extraordinary Items</b>					
9920 Special Items – Gains					
9930 Extraordinary Items – Gains					
5520 Special Items – Losses					
5530 Extraordinary Items – Losses					
<b>Net Change In Fund Balances</b>	<b>\$4,296,983</b>				
<b>Fund Balance</b>					
0001 Fund Balance - Beginning of Fiscal Year	4,542,742				
<b>Fund Balance - End Of Year</b>	<b>\$8,839,725</b>				



Amounts Expressed in Whole Dollars	<u>Capital Reserve (690.</u> <u>1850)</u> <u>(31)</u>	<u>Capital Reserve (1431)</u> <u>(32)</u>	<u>Other Capital Projects</u> <u>Fund</u> <u>(39)</u>	<u>Debt Service</u> <u>(40)</u>	<u>Permanent</u> <u>(90)</u>
<b>Special And Extraordinary Items</b>					
9920 Special Items – Gains					
9930 Extraordinary Items – Gains					
5520 Special Items – Losses					
5530 Extraordinary Items – Losses					
<b>Net Change In Fund Balances</b>			<b>\$1,146,588</b>		
<b>Fund Balance</b>					
0001 Fund Balance - Beginning of Fiscal Year			3,332,286		
<b>Fund Balance - End Of Year</b>			<b>\$4,478,874</b>		

Amounts Expressed in Whole Dollars	<u>Total Governmental Funds</u>
<b>Special And Extraordinary Items</b>	
9920 Special Items – Gains	
9930 Extraordinary Items – Gains	
5520 Special Items – Losses	
5530 Extraordinary Items – Losses	
<b>Net Change In Fund Balances</b>	<b>\$5,443,571</b>
<b>Fund Balance</b>	
0001 Fund Balance - Beginning of Fiscal Year	7,875,028
<b>Fund Balance - End Of Year</b>	<b>\$13,318,599</b>

Amounts Expressed in Whole Dollars	<u>Food Service</u> (51)	<u>Child Care</u> <u>Operations</u> (52)	<u>Other Enterprise</u> (58)	<u>TOTAL</u>	<u>Internal Service</u> (60)
<b>Assets And Deferred Outflows Of Resources</b>					
<b>Current Assets</b>					
0100 Cash and Cash Equivalents	80,425			80,425	
0110 Investments					
0130 Due From Other Funds					
0141 Due From Other Governments	43,886			43,886	
0142 State Revenue Receivable					
0143 Federal Revenue Receivable					
0146 Due from Primary Government					
0147 Due from Component Unit					
0150 Other Receivables	429			429	
0170 Inventories	15,278			15,278	
0180 Prepaid Expenses (Expenditures)					
0190 Other Current Assets					
<b>Total Current Assets</b>	<b>\$140,018</b>			<b>\$140,018</b>	
<b>Noncurrent Assets</b>					
0211 Land					
0212 Site Improvements (Net)					
0220 Buildings and Building Improvements (Net)					
0230 Machinery, Equipment and Furniture (Net)	60,715			60,715	
0250 Construction in Progress					
0260 Long Term Prepayments					
0290 Other Noncurrent Assets					
<b>Total Noncurrent Assets</b>	<b>\$60,715</b>			<b>\$60,715</b>	
0910 Deferred Outflows of Resources	261,639			261,639	
<b>Total Assets And Deferred Outflows Of Resources</b>	<b>\$462,372</b>			<b>\$462,372</b>	

Amounts Expressed in Whole Dollars	<u>Food Service</u> <u>(51)</u>	<u>Child Care</u> <u>Operations</u> <u>(52)</u>	<u>Other Enterprise</u> <u>(58)</u>	<u>TOTAL</u>	<u>Internal Service</u> <u>(60)</u>
<b>Liabilities And Deferred Inflows Of Resources And Net Position</b>					
<b>Current Liabilities</b>					
0400 Due to Other Funds	33,631			33,631	
0411 Due to Other Governments					
0413 Due to Component Unit					
0420 Accounts Payable	8,246			8,246	
0430 Contracts Payable					
0440 Current Portion of Long-Term Debt					
0450 Short-Term Payables					
0461 Accrued Salaries and Benefits					
0462 Payroll Deductions and Withholding					
0480 Unearned Revenues	62,627			62,627	
0490 Other Current Liabilities					
<b>Total Current Liabilities</b>	<b>\$104,504</b>			<b>\$104,504</b>	
<b>Noncurrent Liabilities</b>					
0510 Bonds Payable					
0520 Extended-Term Financing Agreements Payable					
0530 Lease-Purchase Obligations					
0540 Accumulated Compensated Absences	16,873			16,873	
0550 Authority Lease Obligations					
0560 Other Post-Employment Benefits (OPEB)	91,000			91,000	
0570 Net Pension Liability	1,997,000			1,997,000	
0599 Other Noncurrent Liabilities					
<b>Total Noncurrent Liabilities</b>	<b>\$2,104,873</b>			<b>\$2,104,873</b>	
<b>Total Liabilities</b>	<b>\$2,209,377</b>			<b>\$2,209,377</b>	
0950 Deferred Inflows of Resources	247,000			247,000	
<b>Net Position</b>					
0791 Net Investment in Capital Assets	60,715			60,715	
0008 Restricted Net Position (0792 – 0798)					
0799 Unrestricted Net Position	(2,054,720)			(2,054,720)	
<b>Total Net Position</b>	<b>(\$1,994,005)</b>			<b>(\$1,994,005)</b>	
<b>Total Liabilities And Deferred Inflows Of Resources And Net Position</b>	<b>\$462,372</b>			<b>\$462,372</b>	

Amounts Expressed in Whole Dollars	<u>Food Service</u> <u>(51)</u>	<u>Child Care Operations</u> <u>(52)</u>	<u>Other Enterprise</u> <u>(58)</u>	<u>TOTAL</u>	<u>Internal Service</u> <u>(60)</u>
<b>Operating Revenues</b>					
6600 Food Service Revenue	880,308			880,308	
0071 Charges for Services					
0072 Other Operating Revenue					
<b>Total Operating Revenues</b>	<b>\$880,308</b>			<b>\$880,308</b>	
<b>Operating Expenses</b>					
100 Personnel Services – Salaries	602,304			602,304	
200 Personnel Services – Employee Benefits	317,081			317,081	
300 Purchased Professional and Technical Services	5,653			5,653	
400 Purchased Property Services	31,430			31,430	
500 Other Purchased Services	7,633			7,633	
600 Supplies	702,682			702,682	
740 Depreciation	14,500			14,500	
810 Dues and Fees	3,810			3,810	
890 Miscellaneous Expenditures					
<b>Total Operating Expenses</b>	<b>\$1,685,093</b>			<b>\$1,685,093</b>	
<b>Operating Income (Loss)</b>	<b>(\$804,785)</b>			<b>(\$804,785)</b>	
<b>Non Operating Revenues (Expenses)</b>					
6500 Earnings on Investments	4,427			4,427	
6920 Contributions and Donations from Private Sources					
6930 Gains or Losses on Sale of Fixed Assets					
6991 Refunds of a Prior Year Expenditure					
7000 Revenue from State Sources	163,758			163,758	
8000 Revenue from Federal Sources	567,861			567,861	
9990 Insurance Recoveries					
820 Claims and Judgments Against the LEA					
830 Interest					
<b>TOTAL Non Operating Revenues (Expenses)</b>	<b>\$736,046</b>			<b>\$736,046</b>	
<b>Income (Loss) Before Contributions And Transfers</b>	<b>(\$68,739)</b>			<b>(\$68,739)</b>	

Amounts Expressed in Whole Dollars	<u>Food Service</u> <u>(51)</u>	<u>Child Care Operations</u> <u>(52)</u>	<u>Other Enterprise</u> <u>(58)</u>	<u>TOTAL</u>	<u>Internal Service</u> <u>(60)</u>
<b>Contributions, Transfers, and Special and Extraordinary Items</b>					
5200 Interfund Transfers – Out					
5300 Transfers Out to Component Units/Primary Governments					
5520 Special Items – Losses					
5530 Extraordinary Items – Losses					
9300 Interfund Transfers - IN					
9500 Capital Contributions					
9700 Transfers IN From Component Units/Primary Governments					
9920 Special Items – Gains					
9930 Extraordinary Items – Gains					
<b>Change In Net Position</b>	<b>(\$68,739)</b>			<b>(\$68,739)</b>	
0002 Net Position - Beginning of Fiscal Year	(1,925,266)			(1,925,266)	
0003 Accounting Changes / Residual Equity Transfers					
<b>Net Position - End Of Year</b>	<b>(\$1,994,005)</b>			<b>(\$1,994,005)</b>	

Amounts Expressed in Whole Dollars	<u>Food Service</u> <u>(51)</u>	<u>Child Care Operations</u> <u>(52)</u>	<u>Other Enterprise</u> <u>(58)</u>	<u>TOTAL</u>	<u>Internal Service(60)</u>
<b>Cash Flows From Operating Activities</b>					
0011 Cash Receipts From Users	885,431			885,431	
0012 Cash Receipts From Assessments Made to Other Funds					
0013 Cash Receipts From Earnings on Investments					
0014 Cash Receipts From Other Operating Revenue					
0015 Cash Payments To Employees For Services	990,498			990,498	
0016 Cash Payments For Insurance Claims					
0017 Cash Payments To Suppliers For Goods and Services	598,940			598,940	
0018 Cash Payments For Other Operating Expenses					
<b>Net Cash Provided By (Used For) Operating Activities</b>	<b>(\$704,007)</b>			<b>(\$704,007)</b>	
<b>Cash Flows From Non-Capital Financing Activities</b>					
0021 Receipts From Local Sources - 6000					
0022 Receipts From State Sources - 7000	163,758			163,758	
0023 Receipts From Federal Sources -8000	425,341			425,341	
0024 Notes and Loans Received (Repaid)					
0025 Interest Paid on Notes/Loans - 5100-830					
0026 Operating Transfers In (Out)/Residual Equity Trans					
0027 Operating Transfers In (Out) Primary Government / Comp Unit					
0028 Receipts From Refund of Prior Year Expenditures - 6991					
0029 Special and Extraordinary Gains (losses)					
0030 Receipts from Insurance Recoveries -9990					
<b>Net Cash Prov By (Used for) Non-Capital Financing Activities</b>	<b>\$589,099</b>			<b>\$589,099</b>	
<b>Cash Flows From Capital and Related Financing Activities</b>					
0031 Payments For Fac Acq, Const, and Imp - 4000	(9,540)			(9,540)	
0032 Gain / (Loss) on Sale of Fixed Assets - 6930					
0033 Proceeds From Extended Term Financing - 9200					
0034 Principal Paid on Financing Agreements					
0035 Interest Paid on Financing Agreements - 5100-830					
0036 (Inc) Dec in Contributed Capital					
<b>Net Cash Prov By (Used for) Capital and Related Financing Activities</b>	<b>(\$9,540)</b>			<b>(\$9,540)</b>	
<b>Cash Flows From Investing Activities</b>					
0041 Earnings on Investments - 6500	4,427			4,427	
0042 Purchase of Inv Securities / Deposits to Inv Pools					
0043 Receipts From Investment Pool Withdrawals					
0044 Proceeds from Sale and Maturity of Inv Securities					

LEA : 103027503 Plum Borough SD

Printed 11/18/2020 1:44:31 PM

0045 Loans Received (Paid)

<b>Net Cash Prov By (Used for) Investing Activities</b>	<b>\$4,427</b>	<b>\$4,427</b>
---	----------------	----------------



	<u>Food Service</u> <u>(51)</u>	<u>Child Care Operations</u> <u>(52)</u>	<u>Other Enterprise</u> <u>(58)</u>	<u>TOTAL</u>	<u>Internal Service</u> <u>(60)</u>
<b>Net Increase (Decrease) in Cash Flows</b>	<b>(120,021)</b>			<b>(120,021)</b>	
0004 Cash and Cash Equivalents Beginning of Year	199,041			199,041	
<b>Cash and Cash Equivalents at Year End</b>	<b>\$79,020</b>			<b>\$79,020</b>	
<hr/>					
<b>Reconciliation of Operating Income (Loss) To Net Cash Provided by (Used For) Operating Activities</b>					
0005 Operating Income (Loss) per REP	(804,785)			(804,785)	
<b>Adjustments</b>					
0051 Depreciation and Net Amortization	14,500			14,500	
0052 Provision for Uncollectible Accounts					
0053 Other Adjustments	113,567			113,567	
<b>Effect of Changes in Assets, Liabilities, Deferred Outflows and Deferred Inflows</b>					
0054 (Inc) Dec In Accounts Receivable (0120-0150)	5,123			5,123	
0055 Advances to Other Funds (0160)					
0056 (Inc) Dec in Inventories (0170)	(2,758)			(2,758)	
0057 (Inc) Dec in Prepaid Expenses (0180)					
0058 (Inc) Dec in Other Current or Noncurrent Assets					
0064 Deferred Outflows (0910)	32,283			32,283	
0059 Inc (Dec) in Accounts Payable (0400-0450)	(7,205)			(7,205)	
0060 Inc (Dec) in Accrued Salaries/Benefits (0461)	1,337			1,337	
0065 Inc (Dec) in Net Pension Liabilities (0570)					
0066 Inc (Dec) in Other Postemp Benefit Oblig (0560)	(2,892)			(2,892)	
0061 Inc (Dec) in Payroll Deductions/Withholding (0462)					
0062 Inc (Dec) in Unearned Revenue (0480)	26,827			26,827	
0063 Inc (Dec) in Other Current or Noncurrent Liabilities	(269,000)			(269,000)	
0067 Deferred Inflows (0950)	189,000			189,000	
<b>Total Adjustments</b>	<b>\$100,782</b>			<b>\$100,782</b>	
<b>Cash Provided By (Used for) Total</b>	<b>(\$704,003)</b>			<b>(\$704,003)</b>	

COMBINED STATEMENT OF CASH FLOWS  
SCHEDULE OF NONCASH INVESTING, CAPITAL, AND FINANCING ACTIVITIES

Explanation of Transaction and Balance Sheet Effect	Amount
<b>Total</b>	

LEA : 103027503 Plum Borough SD

Printed 11/18/2020 1:44:39 PM

Amounts Expressed in Whole Dollars

Private Purpose Trust  
(71)

Investment Trust  
(72)

Pension Trust  
(73)

Student Activity Custodial  
(81)

**Assets And Deferred Outflows Of Resources**

**Assets**

0100 Cash and Cash Equivalents				119,888
0110 Investments				
0130 Due From Other Funds				
0140 Due from Other Governments, Primary Government and Component Units				
0150 Other Receivables				
0170 Inventories				
0180 Prepaid Expenses (Expenditures)				
0190 Other Current Assets				
0220 Buildings and Building Improvements (Net)				
0230 Machinery, Equipment and Furniture (Net)				

<b>Total Assets</b>				<b>\$119,888</b>
---------------------	--	--	--	------------------

0910 Deferred Outflows of Resources

<b>Total Assets And Deferred Outflows Of Resources</b>				<b>\$119,888</b>
--	--	--	--	------------------

LEA : 103027503 Plum Borough SD

Printed 11/18/2020 1:44:39 PM

Amounts Expressed in Whole Dollars	<u>Other Custodial</u> <u>(89)</u>	<u>Fiduciary Component Units</u> <u>(98)</u>	<u>Total Fiduciary Funds</u>
<b>Assets And Deferred Outflows Of Resources</b>			
<b>Assets</b>			
0100 Cash and Cash Equivalents			119,888
0110 Investments			
0130 Due From Other Funds			
0140 Due from Other Governments, Primary Government and Component Units			
0150 Other Receivables			
0170 Inventories			
0180 Prepaid Expenses (Expenditures)			
0190 Other Current Assets			
0220 Buildings and Building Improvements (Net)			
0230 Machinery, Equipment and Furniture (Net)			
<b>Total Assets</b>			<b>\$119,888</b>
0910 Deferred Outflows of Resources			
<b>Total Assets And Deferred Outflows Of Resources</b>			<b>\$119,888</b>

LEA : 103027503 Plum Borough SD

Printed 11/18/2020 1:44:39 PM

Amounts Expressed in Whole Dollars

Private Purpose Trust  
(71)

Investment Trust  
(72)

Pension Trust  
(73)

Student Activity Custodial  
(81)

**Liabilities, Deferred Inflows Of Resources And Net Position**

**Liabilities**

0400	Due to Other Funds			
0410	Due to Other Governments, Primary Government and Component Units			
0420	Accounts Payable			119,888
0430	Contracts Payable			
0450	Short-Term Payables			
0460	Payroll Accruals and Withholdings			
0480	Unearned Revenues			
0490	Other Current Liabilities			

**Total Liabilities** **\$119,888**

0950 Deferred Inflows of Resources

**Net Position**

0791	Net Investment in Capital Assets
0009	Restricted Net Position (0792 – 0798)
0799	Unrestricted Net Position

**Total Net Position** **\$119,888**

**Total Liabilities, Deferred Inflows Of Resources And Net Position** **\$119,888**

LEA : 103027503 Plum Borough SD

Printed 11/18/2020 1:44:39 PM

Amounts Expressed in Whole Dollars

Other Custodial  
(89)

Fiduciary Component Units  
(98)

Total Fiduciary Funds

**Liabilities, Deferred Inflows Of Resources And Net Position**

**Liabilities**

0400 Due to Other Funds	
0410 Due to Other Governments, Primary Government and Component Units	
0420 Accounts Payable	119,888
0430 Contracts Payable	
0450 Short-Term Payables	
0460 Payroll Accruals and Withholdings	
0480 Unearned Revenues	
0490 Other Current Liabilities	

**Total Liabilities** **\$119,888**

0950 Deferred Inflows of Resources

**Net Position**

0791 Net Investment in Capital Assets
0009 Restricted Net Position (0792 – 0798)
0799 Unrestricted Net Position

**Total Net Position** **\$119,888**

**Total Liabilities, Deferred Inflows Of Resources And Net Position** **\$119,888**

	<u>Revenue Reported In Current Year</u>	<u>Current Year Tax Accrual</u>	<u>Prior Year Tax Accrual</u>	<u>Taxes Collected In Current Year</u>
<b><u>Revenue from Local Sources</u></b>				
6111 Current Real Estate Taxes	30,369,725.77			30,369,725.77
6113 Public Utility Realty Taxes	30,592.29			30,592.29
6120 Current Per Capita Taxes, Section 679	56,296.95			56,296.95
6141 Current Act 511 Per Capita Taxes	56,296.95			56,296.95
6143 Current Act 511 Local Services Taxes	30,661.15			30,661.15
6151 Current Act 511 Earned Income Taxes	4,003,205.26			4,003,205.26
6153 Current Act 511 Real Estate Transfer Taxes	408,632.04			408,632.04
6411 Delinquent Real Estate Taxes	1,118,205.27			1,118,205.27
6500 Earnings on Investments	258,563.24			
6700 Revenues from LEA Activities	76,199.00			
6821 State Revenue Received from Other Pennsylvania Public LEAs	3,455.04			
6832 Federal IDEA Revenue Received as Pass Through	635,565.74			
6910 Rentals	20,458.86			
6944 Receipts from Other LEAs in Pennsylvania - Education	133,585.34			
6991 Refunds of a Prior Year Expenditure	24,620.04			
6999 Other Revenues Not Specified Above	172,530.89			
<b>TOTAL Revenue from Local Sources</b>	<b>\$37,398,593.83</b>			<b>\$36,073,615.68</b>

**Revenue Reported  
In Current Year**

**Revenue from State Sources**

7111 Basic Education Funding-Formula	13,141,933.02		
7271 Special Education funds for School-Aged Pupils	2,550,794.42		
7311 Pupil Transportation Subsidy	1,334,982.84		
7312 Nonpublic and Charter School Pupil Transportation Subsidy	97,790.00		
7320 Rental and Sinking Fund Payments / Building Reimbursement Subsidy	837,011.43		
7330 Health Services (Medical, Dental, Nurse, Act 25)	71,388.16		
7340 State Property Tax Reduction Allocation	1,653,681.14		
7505 Ready to Learn Block Grant	618,345.00		
7599 Other State Revenue Not Listed Elsewhere in the 7000 Series	323.74		
7810 State Share of Social Security and Medicare Taxes	1,109,450.11		
7820 State Share of Retirement Contributions	5,534,956.54		
<b>TOTAL Revenue from State Sources</b>	<b>\$26,950,656.40</b>		



**Revenue Reported  
In Current Year**

**Revenue from Federal Sources**

8190 Other Unrestricted Federal Grants-in-Aid Direct from the Federal Government	408,541.76		
8390 Other Restricted Federal Grants-in-Aid Directly from the Federal Government	78,774.26		
8514 NCLB, Title I - Improving the Academic Achievement of the Disadvantaged	312,412.00		
8515 NCLB, Title II - Preparing, Training and Recruiting High Quality Teachers and Principals	77,435.00		
8516 NCLB, Title III - Language Instruction for Limited English Proficient and Immigrant Students	850.08		
8517 NCLB, Title IV - 21St Century Schools	23,949.00		
8810 School-Based Access Medicaid Reimbursement Program (SBAP) Reimbursements (Access)	902,815.41		
<b>TOTAL Revenue from Federal Sources</b>	<b>\$1,804,777.51</b>		

**Revenue Reported  
In Current Year**

**Other Financing Sources**

9120 Proceeds from Refunding of Bonds	48,565,000.00		
<b>TOTAL Other Financing Sources</b>	<b>\$48,565,000.00</b>		
<b>TOTAL FROM ALL SOURCES</b>	<b>\$114,719,027.74</b>		<b>\$36,073,615.68</b>

LEA : 103027503 Plum Borough SD

Printed 11/18/2020 1:44:50 PM

	<u>General Fund (10)</u>	<u>Student Sponsored Activity Fund (21)</u>	<u>Public Purpose Trust (27)</u>	<u>Other Compt Approved (28)</u>	<u>Athletic / Activity (29)</u>	<u>Capital Reserve (690, 1850) (31)</u>
<b>6000 Revenue from Local Sources</b>						
6111 Current Real Estate Taxes	30,369,725.77					
6113 Public Utility Realty Taxes	30,592.29					
6120 Current Per Capita Taxes, Section 679	56,296.95					
6141 Current Act 511 Per Capita Taxes	56,296.95					
6143 Current Act 511 Local Services Taxes	30,661.15					
6151 Current Act 511 Earned Income Taxes	4,003,205.26					
6153 Current Act 511 Real Estate Transfer Taxes	408,632.04					
6411 Delinquent Real Estate Taxes	1,118,205.27					
6500 Earnings on Investments	258,563.24					
6700 Revenues from LEA Activities	76,199.00					
6821 State Revenue Received from Other Pennsylvania Public LEAs	3,455.04					
6832 Federal IDEA Revenue Received as Pass Through	635,565.74					
6910 Rentals	20,458.86					
6944 Receipts from Other LEAs in Pennsylvania - Education	133,585.34					
6991 Refunds of a Prior Year Expenditure	24,620.04					
6999 Other Revenues Not Specified Above	172,530.89					
<b>6000 Total Revenue from Local Sources</b>	<b>\$37,398,593.83</b>					
<b>7000 Revenue from State Sources</b>						
7111 Basic Education Funding-Formula	13,141,933.02					
7271 Special Education funds for School-Aged Pupils	2,550,794.42					
7311 Pupil Transportation Subsidy	1,334,982.84					
7312 Nonpublic and Charter School Pupil Transportation Subsidy	97,790.00					
7320 Rental and Sinking Fund Payments / Building Reimbursement Subsidy	837,011.43					
7330 Health Services (Medical, Dental, Nurse, Act 25)	71,388.16					
7340 State Property Tax Reduction Allocation	1,653,681.14					
7505 Ready to Learn Block Grant	618,345.00					
7599 Other State Revenue Not Listed Elsewhere in the 7000 Series	323.74					
7810 State Share of Social Security and Medicare Taxes	1,109,450.11					
7820 State Share of Retirement Contributions	5,534,956.54					
<b>7000 Total Revenue from State Sources</b>	<b>\$26,950,656.40</b>					
<b>8000 Revenue from Federal Sources</b>						
8190 Other Unrestricted Federal Grants-in-Aid Direct from the Federal Government	408,541.76					
8390 Other Restricted Federal Grants-in-Aid Directly from the Federal Government	78,774.26					
8514 NCLB, Title I - Improving the Academic Achievement of the Disadvantaged	312,412.00					

LEA : 103027503 Plum Borough SD

Printed 11/18/2020 1:44:50 PM

	<u>Capital Reserve</u> <u>(1431) (32)</u>	<u>Other Capital</u> <u>Projects Fund (39)</u>	<u>Debt Service (40)</u>	<u>Permanent (90)</u>	<u>Total</u>
<b>6000 Revenue from Local Sources</b>					
6111 Current Real Estate Taxes					30,369,725.77
6113 Public Utility Realty Taxes					30,592.29
6120 Current Per Capita Taxes, Section 679					56,296.95
6141 Current Act 511 Per Capita Taxes					56,296.95
6143 Current Act 511 Local Services Taxes					30,661.15
6151 Current Act 511 Earned Income Taxes					4,003,205.26
6153 Current Act 511 Real Estate Transfer Taxes					408,632.04
6411 Delinquent Real Estate Taxes					1,118,205.27
6500 Earnings on Investments		60,425.00			318,988.24
6700 Revenues from LEA Activities					76,199.00
6821 State Revenue Received from Other Pennsylvania Public LEAs					3,455.04
6832 Federal IDEA Revenue Received as Pass Through					635,565.74
6910 Rentals					20,458.86
6944 Receipts from Other LEAs in Pennsylvania - Education					133,585.34
6991 Refunds of a Prior Year Expenditure					24,620.04
6999 Other Revenues Not Specified Above					172,530.89
<b>6000 Total Revenue from Local Sources</b>		<b>\$60,425.00</b>			<b>\$37,459,018.83</b>
<b>7000 Revenue from State Sources</b>					
7111 Basic Education Funding-Formula					13,141,933.02
7271 Special Education funds for School-Aged Pupils					2,550,794.42
7311 Pupil Transportation Subsidy					1,334,982.84
7312 Nonpublic and Charter School Pupil Transportation Subsidy					97,790.00
7320 Rental and Sinking Fund Payments / Building Reimbursement Subsidy					837,011.43
7330 Health Services (Medical, Dental, Nurse, Act 25)					71,388.16
7340 State Property Tax Reduction Allocation					1,653,681.14
7505 Ready to Learn Block Grant					618,345.00
7599 Other State Revenue Not Listed Elsewhere in the 7000 Series					323.74
7810 State Share of Social Security and Medicare Taxes					1,109,450.11
7820 State Share of Retirement Contributions					5,534,956.54
<b>7000 Total Revenue from State Sources</b>					<b>\$26,950,656.40</b>
<b>8000 Revenue from Federal Sources</b>					
8190 Other Unrestricted Federal Grants-in-Aid Direct from the Federal Government					408,541.76
8390 Other Restricted Federal Grants-in-Aid Directly from the Federal Government					78,774.26
8514 NCLB, Title I - Improving the Academic Achievement of the Disadvantaged					312,412.00

	<u>General Fund (10)</u>	<u>Student Sponsored Activity Fund (21)</u>	<u>Public Purpose Trust (27)</u>	<u>Other Compt Approved (28)</u>	<u>Athletic / Activity (29)</u>	<u>Capital Reserve (690.1850) (31)</u>
<b>8000 Revenue from Federal Sources</b>						
8515 NCLB, Title II - Preparing, Training and Recruiting High Quality Teachers and Principals	77,435.00					
8516 NCLB, Title III - Language Instruction for Limited English Proficient and Immigrant Students	850.08					
8517 NCLB, Title IV - 21st Century Schools	23,949.00					
8810 School-Based Access Medicaid Reimbursement Program (SBAP) Reimbursements (Access)	902,815.41					
<b>8000 Total Revenue from Federal Sources</b>	<b>\$1,804,777.51</b>					
<b>9000 Other Financing Sources</b>						
9120 Proceeds from Refunding of Bonds	48,565,000.00					
9310 General Fund Transfers						
<b>9000 Total Other Financing Sources</b>	<b>\$48,565,000.00</b>					
<b>Total From All Sources</b>	<b>\$114,719,027.74</b>					

	<u>Capital Reserve</u> <u>(1431) (32)</u>	<u>Other Capital</u> <u>Projects Fund (39)</u>	<u>Debt Service (40)</u>	<u>Permanent (90)</u>	<u>Total</u>
<b>8000 Revenue from Federal Sources</b>					
8515 NCLB, Title II - Preparing, Training and Recruiting High Quality Teachers and Principals					77,435.00
8516 NCLB, Title III - Language Instruction for Limited English Proficient and Immigrant Students					850.08
8517 NCLB, Title IV - 21st Century Schools					23,949.00
8810 School-Based Access Medicaid Reimbursement Program (SBAP) Reimbursements (Access)					902,815.41
<b>8000 Total Revenue from Federal Sources</b>					<b>\$1,804,777.51</b>
<b>9000 Other Financing Sources</b>					
9120 Proceeds from Refunding of Bonds					48,565,000.00
9310 General Fund Transfers		3,470,322.00			3,470,322.00
<b>9000 Total Other Financing Sources</b>		<b>\$3,470,322.00</b>			<b>\$52,035,322.00</b>
<b>Total From All Sources</b>		<b>\$3,530,747.00</b>			<b>\$118,249,774.74</b>

	<u>General Fund (10)</u>	<u>Student Sponsored Activity Fund (21)</u>	<u>Public Purpose Trust (27)</u>	<u>Other Compt Approved (28)</u>	<u>Athletic / Activity (29)</u>	<u>Capital Reserve (690. 1850) (31)</u>
Revenue from Local Sources	37,398,593.83					
Revenue from State Sources	26,950,656.40					
Revenue from Federal Sources	1,804,777.51					
Other Financing Sources	48,565,000.00					
<b>Total From All Sources</b>	<b>\$114,719,027.74</b>					

	<u>Capital Reserve (1431)</u> <u>(32)</u>	<u>Other Capital Projects</u> <u>Fund (39)</u>	<u>Debt Service (40)</u>	<u>Permanent (90)</u>	<u>Total</u>
Revenue from Local Sources		60,425.00			37,459,018.83
Revenue from State Sources					26,950,656.40
Revenue from Federal Sources					1,804,777.51
Other Financing Sources		3,470,322.00			52,035,322.00
<b>Total From All Sources</b>		<b>\$3,530,747.00</b>			<b>\$118,249,774.74</b>



General Fund (10)

	<u>Total</u>
<b>1000 Instruction</b>	
<b>100 Personnel Services – Salaries</b>	
100 Personnel Services – Salaries	19,181,024.83
<b>Total Personnel Services – Salaries</b>	<b>\$19,181,024.83</b>
<b>200 Personnel Services – Employee Benefits</b>	
210 Group Insurance – Contracted Provider	2,998,151.96
220 Social Security Contributions	1,438,188.26
230 PSERS Retirement Contributions	6,515,898.89
250 Unemployment Compensation	4,625.58
260 Workers’ Compensation	94,025.41
280 Other Post-Employment Benefits (OPEB)	507,211.61
<b>Total Personnel Services – Employee Benefits</b>	<b>\$11,558,101.71</b>
<b>300 Purchased Professional and Technical Services</b>	
310 Official / Administrative Services	(80,268.92)
322 Professional Educational Services – lus	48,714.24
323 Professional Educational Services – Other Educational Agencies	131,351.56
329 Professional Educational Services – Other	378,852.71
330 Other Professional Services	35,603.96
<b>Total Purchased Professional and Technical Services</b>	<b>\$514,253.55</b>
<b>400 Purchased Property Services</b>	
430 Repairs and Maintenance Services	4,739.47
440 Rentals	272,394.41
<b>Total Purchased Property Services</b>	<b>\$277,133.88</b>
<b>500 Other Purchased Services</b>	
561 Tuition To Other School Districts Within the State	74,486.28
562 Tuition To Pennsylvania Charter Schools	1,008,842.08
564 Tuition To Career and Technology Centers	626,269.96
567 Tuition To Approved Private Schools (APS) and PA Chartered Schools for the Deaf and Blind	1,111,811.12
568 Tuition To Private Residential Rehabilitative Institutions (PRRI) [In-State] and Detention Centers	1,008.60
569 Tuition – Other	555,784.71
580 Travel	4,764.03
<b>Total Other Purchased Services</b>	<b>\$3,382,966.78</b>
<b>600 Supplies</b>	
610 General Supplies	311,772.28
640 Books and Periodicals	498,273.56
<b>Total Supplies</b>	<b>\$810,045.84</b>
<b>700 Property</b>	
762 Capitalized Equipment - Replacement	78,227.54
<b>Total Property</b>	<b>\$78,227.54</b>
<b>800 Other Objects</b>	
810 Dues and Fees	11,103.85
<b>Total Other Objects</b>	<b>\$11,103.85</b>
<b>Total 1000 Instruction</b>	<b>\$35,812,857.98</b>

**General Fund (10)**

1100 Regular Programs – Elementary / Secondary	<u>Elementary</u>	<u>Secondary</u>	<u>Federal</u>	<u>Total</u>
<b>100 Personnel Services – Salaries</b>				
100 Personnel Services – Salaries	8,022,197.21	8,172,287.92	261,610.08	16,456,095.21
<b>Total Personnel Services – Salaries</b>	<b>\$8,022,197.21</b>	<b>\$8,172,287.92</b>	<b>\$261,610.08</b>	<b>\$16,456,095.21</b>
<b>200 Personnel Services – Employee Benefits</b>				
210 Group Insurance – Contracted Provider	1,305,582.10	1,278,860.78	34,183.02	2,618,625.90
220 Social Security Contributions	602,207.16	612,776.62	20,013.17	1,234,996.95
230 PSERS Retirement Contributions	2,763,045.47	2,773,465.85	44,853.05	5,581,364.37
250 Unemployment Compensation	(8,186.36)	(10,116.59)	1,598.96	(16,703.99)
260 Workers' Compensation	39,190.03	40,099.82	1,438.86	80,728.71
280 Other Post-Employment Benefits (OPEB)	258,677.92	248,533.69		507,211.61
<b>Total Personnel Services – Employee Benefits</b>	<b>\$4,960,516.32</b>	<b>\$4,943,620.17</b>	<b>\$102,087.06</b>	<b>\$10,006,223.55</b>
<b>300 Purchased Professional and Technical Services</b>				
329 Professional Educational Services – Other	181,269.37	174,160.76	6,204.00	361,634.13
330 Other Professional Services	1,300.50	1,249.50	25,505.26	28,055.26
<b>Total Purchased Professional and Technical Services</b>	<b>\$182,569.87</b>	<b>\$175,410.26</b>	<b>\$31,709.26</b>	<b>\$389,689.39</b>
<b>400 Purchased Property Services</b>				
430 Repairs and Maintenance Services		4,739.47		4,739.47
440 Rentals	152,256.36	120,138.05		272,394.41
<b>Total Purchased Property Services</b>	<b>\$152,256.36</b>	<b>\$124,877.52</b>		<b>\$277,133.88</b>
<b>500 Other Purchased Services</b>				
562 Tuition To Pennsylvania Charter Schools	253,520.40	377,897.15		631,417.55
569 Tuition – Other		191,158.58		191,158.58
580 Travel	142.19	2,691.87	873.04	3,707.10
<b>Total Other Purchased Services</b>	<b>\$253,662.59</b>	<b>\$571,747.60</b>	<b>\$873.04</b>	<b>\$826,283.23</b>
<b>600 Supplies</b>				
610 General Supplies	120,830.10	114,098.45	26,077.02	261,005.57
640 Books and Periodicals	498,273.56			498,273.56
<b>Total Supplies</b>	<b>\$619,103.66</b>	<b>\$114,098.45</b>	<b>\$26,077.02</b>	<b>\$759,279.13</b>
<b>700 Property</b>				
762 Capitalized Equipment - Replacement		78,227.54		78,227.54
<b>Total Property</b>		<b>\$78,227.54</b>		<b>\$78,227.54</b>
<b>Total 1100 Regular Programs – Elementary / Secondary</b>	<b>\$14,190,306.01</b>	<b>\$14,180,269.46</b>	<b>\$422,356.46</b>	<b>\$28,792,931.93</b>

**General Fund (10)**

	<u>Elementary</u>	<u>Secondary</u>	<u>Federal</u>	<u>Total</u>
<b>1110 Regular Programs</b>				
<b>100 Personnel Services – Salaries</b>				
100 Personnel Services – Salaries	8,022,197.21	8,172,287.92		16,194,485.13
<b>Total Personnel Services – Salaries</b>	<b>\$8,022,197.21</b>	<b>\$8,172,287.92</b>		<b>\$16,194,485.13</b>
<b>200 Personnel Services – Employee Benefits</b>				
210 Group Insurance – Contracted Provider	1,305,582.10	1,278,860.78		2,584,442.88
220 Social Security Contributions	602,207.16	612,776.62		1,214,983.78
230 PSERS Retirement Contributions	2,763,045.47	2,773,465.85		5,536,511.32
250 Unemployment Compensation	(8,186.36)	(10,116.59)		(18,302.95)
260 Workers' Compensation	39,190.03	40,099.82		79,289.85
280 Other Post-Employment Benefits (OPEB)	258,677.92	248,533.69		507,211.61
<b>Total Personnel Services – Employee Benefits</b>	<b>\$4,960,516.32</b>	<b>\$4,943,620.17</b>		<b>\$9,904,136.49</b>
<b>300 Purchased Professional and Technical Services</b>				
329 Professional Educational Services – Other	181,269.37	174,160.76		355,430.13
330 Other Professional Services	1,300.50	1,249.50		2,550.00
<b>Total Purchased Professional and Technical Services</b>	<b>\$182,569.87</b>	<b>\$175,410.26</b>		<b>\$357,980.13</b>
<b>400 Purchased Property Services</b>				
430 Repairs and Maintenance Services		4,739.47		4,739.47
440 Rentals	152,256.36	120,138.05		272,394.41
<b>Total Purchased Property Services</b>	<b>\$152,256.36</b>	<b>\$124,877.52</b>		<b>\$277,133.88</b>
<b>500 Other Purchased Services</b>				
562 Tuition To Pennsylvania Charter Schools	253,520.40	377,897.15		631,417.55
569 Tuition – Other		191,158.58		191,158.58
580 Travel	142.19	2,691.87		2,834.06
<b>Total Other Purchased Services</b>	<b>\$253,662.59</b>	<b>\$571,747.60</b>		<b>\$825,410.19</b>
<b>600 Supplies</b>				
610 General Supplies	120,830.10	114,098.45		234,928.55
640 Books and Periodicals	498,273.56			498,273.56
<b>Total Supplies</b>	<b>\$619,103.66</b>	<b>\$114,098.45</b>		<b>\$733,202.11</b>
<b>700 Property</b>				
762 Capitalized Equipment - Replacement		78,227.54		78,227.54
<b>Total Property</b>		<b>\$78,227.54</b>		<b>\$78,227.54</b>
<b>Total 1110 Regular Programs</b>	<b>\$14,190,306.01</b>	<b>\$14,180,269.46</b>		<b>\$28,370,575.47</b>

**General Fund (10)**

	<u>Elementary</u>	<u>Secondary</u>	<u>Federal</u>	<u>Total</u>
<b>1190 Federally-Funded Regular Programs</b>				
<b>100 Personnel Services – Salaries</b>				
100 Personnel Services – Salaries			261,610.08	261,610.08
<b>Total Personnel Services – Salaries</b>			<b>\$261,610.08</b>	<b>\$261,610.08</b>
<b>200 Personnel Services – Employee Benefits</b>				
210 Group Insurance – Contracted Provider			34,183.02	34,183.02
220 Social Security Contributions			20,013.17	20,013.17
230 PSERS Retirement Contributions			44,853.05	44,853.05
250 Unemployment Compensation			1,598.96	1,598.96
260 Workers' Compensation			1,438.86	1,438.86
<b>Total Personnel Services – Employee Benefits</b>			<b>\$102,087.06</b>	<b>\$102,087.06</b>
<b>300 Purchased Professional and Technical Services</b>				
329 Professional Educational Services – Other			6,204.00	6,204.00
330 Other Professional Services			25,505.26	25,505.26
<b>Total Purchased Professional and Technical Services</b>			<b>\$31,709.26</b>	<b>\$31,709.26</b>
<b>500 Other Purchased Services</b>				
580 Travel			873.04	873.04
<b>Total Other Purchased Services</b>			<b>\$873.04</b>	<b>\$873.04</b>
<b>600 Supplies</b>				
610 General Supplies			26,077.02	26,077.02
<b>Total Supplies</b>			<b>\$26,077.02</b>	<b>\$26,077.02</b>
<b>Total 1190 Federally-Funded Regular Programs</b>			<b>\$422,356.46</b>	<b>\$422,356.46</b>

**General Fund (10)**

1200 Special Programs – Elementary / Secondary	<u>Elementary</u>	<u>Secondary</u>	<u>Federal</u>	<u>Total</u>
<b>100 Personnel Services – Salaries</b>				
100 Personnel Services – Salaries	1,220,434.47	338,556.15	1,157,093.05	2,716,083.67
<b>Total Personnel Services – Salaries</b>	<b>\$1,220,434.47</b>	<b>\$338,556.15</b>	<b>\$1,157,093.05</b>	<b>\$2,716,083.67</b>
<b>200 Personnel Services – Employee Benefits</b>				
210 Group Insurance – Contracted Provider	129,368.86	173,376.25	76,780.95	379,526.06
220 Social Security Contributions	107,420.34	51,018.99	44,075.21	202,514.54
230 PSERS Retirement Contributions	495,170.27	238,767.43	197,560.65	931,498.35
250 Unemployment Compensation	3,198.51	112.78	17,737.50	21,048.79
260 Workers' Compensation	6,629.61	286.75	6,337.61	13,253.97
<b>Total Personnel Services – Employee Benefits</b>	<b>\$741,787.59</b>	<b>\$463,562.20</b>	<b>\$342,491.92</b>	<b>\$1,547,841.71</b>
<b>300 Purchased Professional and Technical Services</b>				
310 Official / Administrative Services	(31,199.29)	(49,069.63)		(80,268.92)
322 Professional Educational Services – Ius	14,810.20	33,904.04		48,714.24
323 Professional Educational Services – Other Educational Agencies	65,675.78	65,675.78		131,351.56
329 Professional Educational Services – Other	8,781.47	8,437.11		17,218.58
330 Other Professional Services	3,849.84	3,698.86		7,548.70
<b>Total Purchased Professional and Technical Services</b>	<b>\$61,918.00</b>	<b>\$62,646.16</b>		<b>\$124,564.16</b>
<b>500 Other Purchased Services</b>				
561 Tuition To Other School Districts Within the State	37,353.76	36,156.41		73,510.17
562 Tuition To Pennsylvania Charter Schools	74,413.96	303,010.57		377,424.53
567 Tuition To Approved Private Schools (APS) and PA Chartered Schools for the Deaf and Blind	604,853.38	506,957.74		1,111,811.12
568 Tuition To Private Residential Rehabilitative Institutions (PRRI) [In-State] and Detention Centers	36.10	972.50		1,008.60
569 Tuition – Other	164,550.90	200,075.23		364,626.13
580 Travel	403.79	178.80		582.59
<b>Total Other Purchased Services</b>	<b>\$881,611.89</b>	<b>\$1,047,351.25</b>		<b>\$1,928,963.14</b>
<b>600 Supplies</b>				
610 General Supplies	24,749.99	24,112.46	1,904.26	50,766.71
<b>Total Supplies</b>	<b>\$24,749.99</b>	<b>\$24,112.46</b>	<b>\$1,904.26</b>	<b>\$50,766.71</b>
<b>Total 1200 Special Programs – Elementary / Secondary</b>	<b>\$2,930,501.94</b>	<b>\$1,936,228.22</b>	<b>\$1,501,489.23</b>	<b>\$6,368,219.39</b>

**General Fund (10)**

**1220 Sensory Support**

	<u>Elementary</u>	<u>Secondary</u>	<u>Federal</u>	<u>Total</u>
<b>100 Personnel Services – Salaries</b>				
100 Personnel Services – Salaries	152,362.38			152,362.38
<b>Total Personnel Services – Salaries</b>	<b>\$152,362.38</b>			<b>\$152,362.38</b>
<b>200 Personnel Services – Employee Benefits</b>				
210 Group Insurance – Contracted Provider	36,176.49			36,176.49
220 Social Security Contributions	11,242.53			11,242.53
230 PSERS Retirement Contributions	53,053.22			53,053.22
250 Unemployment Compensation	1,343.11			1,343.11
260 Workers' Compensation	745.44			745.44
<b>Total Personnel Services – Employee Benefits</b>	<b>\$102,560.79</b>			<b>\$102,560.79</b>
<b>300 Purchased Professional and Technical Services</b>				
310 Official / Administrative Services	(15,629.99)	(15,017.05)		(30,647.04)
<b>Total Purchased Professional and Technical Services</b>	<b>(\$15,629.99)</b>	<b>(\$15,017.05)</b>		<b>(\$30,647.04)</b>
<b>Total 1220 Sensory Support</b>	<b>\$239,293.18</b>	<b>(\$15,017.05)</b>		<b>\$224,276.13</b>

LEA : 103027503 Plum Borough SD

Printed 11/18/2020 1:45:03 PM

General Fund (10)

1230 Emotional Support

500 Other Purchased Services

561 Tuition To Other School Districts Within the State

Total Other Purchased Services

Total 1230 Emotional Support

	<u>Elementary</u>	<u>Secondary</u>	<u>Federal</u>	<u>Total</u>
561 Tuition To Other School Districts Within the State	37,353.76	35,888.91		73,242.67
<b>Total Other Purchased Services</b>	<b>\$37,353.76</b>	<b>\$35,888.91</b>		<b>\$73,242.67</b>
<b>Total 1230 Emotional Support</b>	<b>\$37,353.76</b>	<b>\$35,888.91</b>		<b>\$73,242.67</b>

**General Fund (10)**

**1240 Academic Support**

	<u>Elementary</u>	<u>Secondary</u>	<u>Federal</u>	<u>Total</u>
<b>100 Personnel Services – Salaries</b>				
100 Personnel Services – Salaries	1,068,072.09	338,556.15	1,157,093.05	2,563,721.29
<b>Total Personnel Services – Salaries</b>	<b>\$1,068,072.09</b>	<b>\$338,556.15</b>	<b>\$1,157,093.05</b>	<b>\$2,563,721.29</b>
<b>200 Personnel Services – Employee Benefits</b>				
210 Group Insurance – Contracted Provider	93,192.37	173,376.25	76,780.95	343,349.57
220 Social Security Contributions	96,177.81	51,018.99	44,075.21	191,272.01
230 PSERS Retirement Contributions	442,117.05	238,767.43	197,560.65	878,445.13
250 Unemployment Compensation	1,855.40	112.78	17,737.50	19,705.68
260 Workers' Compensation	5,884.17	286.75	6,337.61	12,508.53
<b>Total Personnel Services – Employee Benefits</b>	<b>\$639,226.80</b>	<b>\$463,562.20</b>	<b>\$342,491.92</b>	<b>\$1,445,280.92</b>
<b>300 Purchased Professional and Technical Services</b>				
310 Official / Administrative Services	(15,569.30)	(34,052.58)		(49,621.88)
322 Professional Educational Services – Ius		19,093.84		19,093.84
329 Professional Educational Services – Other	8,781.47	8,437.11		17,218.58
330 Other Professional Services	3,849.84	3,698.86		7,548.70
<b>Total Purchased Professional and Technical Services</b>	<b>(\$2,937.99)</b>	<b>(\$2,822.77)</b>		<b>(\$5,760.76)</b>
<b>500 Other Purchased Services</b>				
562 Tuition To Pennsylvania Charter Schools		3,534.32		3,534.32
567 Tuition To Approved Private Schools (APS) and PA Chartered Schools for the Deaf and Blind	58,100.00			58,100.00
580 Travel	403.79	178.80		582.59
<b>Total Other Purchased Services</b>	<b>\$58,503.79</b>	<b>\$3,713.12</b>		<b>\$62,216.91</b>
<b>600 Supplies</b>				
610 General Supplies	24,749.99	24,112.46	1,904.26	50,766.71
<b>Total Supplies</b>	<b>\$24,749.99</b>	<b>\$24,112.46</b>	<b>\$1,904.26</b>	<b>\$50,766.71</b>
<b>Total 1240 Academic Support</b>	<b>\$1,787,614.68</b>	<b>\$827,121.16</b>	<b>\$1,501,489.23</b>	<b>\$4,116,225.07</b>



**General Fund (10)**

	<u>Elementary</u>	<u>Secondary</u>	<u>Federal</u>	<u>Total</u>
<b>1241 Learning Support – Public</b>				
<b>100 Personnel Services – Salaries</b>				
100 Personnel Services – Salaries	923,572.09	280,156.15	1,157,093.05	2,360,821.29
<b>Total Personnel Services – Salaries</b>	<b>\$923,572.09</b>	<b>\$280,156.15</b>	<b>\$1,157,093.05</b>	<b>\$2,360,821.29</b>
<b>200 Personnel Services – Employee Benefits</b>				
210 Group Insurance – Contracted Provider	53,852.97	154,577.69	76,780.95	285,211.61
220 Social Security Contributions	85,532.62	47,009.37	44,075.21	176,617.20
230 PSERS Retirement Contributions	392,568.14	218,742.12	197,560.65	808,870.91
250 Unemployment Compensation	1,837.20		17,737.50	19,574.70
260 Workers' Compensation	5,174.59		6,337.61	11,512.20
<b>Total Personnel Services – Employee Benefits</b>	<b>\$538,965.52</b>	<b>\$420,329.18</b>	<b>\$342,491.92</b>	<b>\$1,301,786.62</b>
<b>300 Purchased Professional and Technical Services</b>				
310 Official / Administrative Services	(15,569.30)	(34,052.58)		(49,621.88)
322 Professional Educational Services – Ius		19,093.84		19,093.84
329 Professional Educational Services – Other	8,781.47	8,437.11		17,218.58
330 Other Professional Services	3,849.84	3,698.86		7,548.70
<b>Total Purchased Professional and Technical Services</b>	<b>(\$2,937.99)</b>	<b>(\$2,822.77)</b>		<b>(\$5,760.76)</b>
<b>500 Other Purchased Services</b>				
562 Tuition To Pennsylvania Charter Schools		3,534.32		3,534.32
567 Tuition To Approved Private Schools (APS) and PA Chartered Schools for the Deaf and Blind	58,100.00			58,100.00
580 Travel	168.31	178.80		347.11
<b>Total Other Purchased Services</b>	<b>\$58,268.31</b>	<b>\$3,713.12</b>		<b>\$61,981.43</b>
<b>600 Supplies</b>				
610 General Supplies	24,749.99	23,779.41	1,904.26	50,433.66
<b>Total Supplies</b>	<b>\$24,749.99</b>	<b>\$23,779.41</b>	<b>\$1,904.26</b>	<b>\$50,433.66</b>
<b>Total 1241 Learning Support – Public</b>	<b>\$1,542,617.92</b>	<b>\$725,155.09</b>	<b>\$1,501,489.23</b>	<b>\$3,769,262.24</b>

**General Fund (10)**

**1243 Gifted Support**

	<u>Elementary</u>	<u>Secondary</u>	<u>Federal</u>	<u>Total</u>
<b>100 Personnel Services – Salaries</b>				
100 Personnel Services – Salaries	144,500.00	58,400.00		202,900.00
<b>Total Personnel Services – Salaries</b>	<b>\$144,500.00</b>	<b>\$58,400.00</b>		<b>\$202,900.00</b>
<b>200 Personnel Services – Employee Benefits</b>				
210 Group Insurance – Contracted Provider	39,339.40	18,798.56		58,137.96
220 Social Security Contributions	10,645.19	4,009.62		14,654.81
230 PSERS Retirement Contributions	49,548.91	20,025.31		69,574.22
250 Unemployment Compensation	18.20	112.78		130.98
260 Workers' Compensation	709.58	286.75		996.33
<b>Total Personnel Services – Employee Benefits</b>	<b>\$100,261.28</b>	<b>\$43,233.02</b>		<b>\$143,494.30</b>
<b>500 Other Purchased Services</b>				
580 Travel	235.48			235.48
<b>Total Other Purchased Services</b>	<b>\$235.48</b>			<b>\$235.48</b>
<b>600 Supplies</b>				
610 General Supplies		333.05		333.05
<b>Total Supplies</b>		<b>\$333.05</b>		<b>\$333.05</b>
<b>Total 1243 Gifted Support</b>	<b>\$244,996.76</b>	<b>\$101,966.07</b>		<b>\$346,962.83</b>

General Fund (10)

1260 Physical Support

300 Purchased Professional and Technical Services

	<u>Elementary</u>	<u>Secondary</u>	<u>Federal</u>	<u>Total</u>
322 Professional Educational Services – lus	14,810.20	14,810.20		29,620.40
323 Professional Educational Services – Other Educational Agencies	65,675.78	65,675.78		131,351.56
<b>Total Purchased Professional and Technical Services</b>	<b>\$80,485.98</b>	<b>\$80,485.98</b>		<b>\$160,971.96</b>
<b>Total 1260 Physical Support</b>	<b>\$80,485.98</b>	<b>\$80,485.98</b>		<b>\$160,971.96</b>

General Fund (10)

1290 Special Programs - Other Support

500 Other Purchased Services

	<u>Elementary</u>	<u>Secondary</u>	<u>Federal</u>	<u>Total</u>
561 Tuition To Other School Districts Within the State		267.50		267.50
562 Tuition To Pennsylvania Charter Schools	74,413.96	299,476.25		373,890.21
567 Tuition To Approved Private Schools (APS) and PA Chartered Schools for the Deaf and Blind	546,753.38	506,957.74		1,053,711.12
568 Tuition To Private Residential Rehabilitative Institutions (PRRI) [In-State] and Detention Centers	36.10	972.50		1,008.60
569 Tuition – Other	164,550.90	200,075.23		364,626.13
<b>Total Other Purchased Services</b>	<b>\$785,754.34</b>	<b>\$1,007,749.22</b>		<b>\$1,793,503.56</b>
<b>Total 1290 Special Programs - Other Support</b>	<b>\$785,754.34</b>	<b>\$1,007,749.22</b>		<b>\$1,793,503.56</b>

General Fund (10)

1300 Vocational Education

Elementary

Secondary

Federal

Total

500 Other Purchased Services

564 Tuition To Career and Technology Centers

626,269.96

626,269.96

**Total Other Purchased Services**

**\$626,269.96**

**\$626,269.96**

800 Other Objects

810 Dues and Fees

11,103.85

11,103.85

**Total Other Objects**

**\$11,103.85**

**\$11,103.85**

**Total 1300 Vocational Education**

**\$637,373.81**

**\$637,373.81**

**General Fund (10)**

	<u>Elementary</u>	<u>Secondary</u>	<u>Federal</u>	<u>Total</u>
<b>1400 Other Instructional Programs – Elementary / Secondary</b>				
<b>100 Personnel Services – Salaries</b>				
100 Personnel Services – Salaries		8,845.95		8,845.95
<b>Total Personnel Services – Salaries</b>		<b>\$8,845.95</b>		<b>\$8,845.95</b>
<b>200 Personnel Services – Employee Benefits</b>				
220 Social Security Contributions		676.77		676.77
230 PSERS Retirement Contributions		3,036.17		3,036.17
250 Unemployment Compensation		280.78		280.78
260 Workers' Compensation		42.73		42.73
<b>Total Personnel Services – Employee Benefits</b>		<b>\$4,036.45</b>		<b>\$4,036.45</b>
<b>500 Other Purchased Services</b>				
561 Tuition To Other School Districts Within the State		976.11		976.11
580 Travel	241.91	232.43		474.34
<b>Total Other Purchased Services</b>	<b>\$241.91</b>	<b>\$1,208.54</b>		<b>\$1,450.45</b>
<b>Total 1400 Other Instructional Programs – Elementary / Secondary</b>	<b>\$241.91</b>	<b>\$14,090.94</b>		<b>\$14,332.85</b>

LEA : 103027503 Plum Borough SD

Printed 11/18/2020 1:45:03 PM

General Fund (10)

1430 Homebound Instruction

100 Personnel Services – Salaries

	<u>Elementary</u>	<u>Secondary</u>	<u>Federal</u>	<u>Total</u>
100 Personnel Services – Salaries		8,845.95		8,845.95
<b>Total Personnel Services – Salaries</b>		<b>\$8,845.95</b>		<b>\$8,845.95</b>

200 Personnel Services – Employee Benefits

220 Social Security Contributions		676.77		676.77
230 PSERS Retirement Contributions		3,036.17		3,036.17
250 Unemployment Compensation		280.78		280.78
260 Workers' Compensation		42.73		42.73
<b>Total Personnel Services – Employee Benefits</b>		<b>\$4,036.45</b>		<b>\$4,036.45</b>

500 Other Purchased Services

580 Travel	241.91	232.43		474.34
<b>Total Other Purchased Services</b>	<b>\$241.91</b>	<b>\$232.43</b>		<b>\$474.34</b>
<b>Total 1430 Homebound Instruction</b>	<b>\$241.91</b>	<b>\$13,114.83</b>		<b>\$13,356.74</b>

LEA : 103027503 Plum Borough SD

Printed 11/18/2020 1:45:03 PM

General Fund (10)

1440 Alternative Regular Education Programs

Elementary

Secondary

Federal

Total

500 Other Purchased Services

561 Tuition To Other School Districts Within the State

976.11

976.11

**Total Other Purchased Services**

**\$976.11**

**\$976.11**

**Total 1440 Alternative Regular Education Programs**

**\$976.11**

**\$976.11**



LEA : 103027503 Plum Borough SD

Printed 11/18/2020 1:45:03 PM

General Fund (10)

1441 Adjudicated / Court-Placed Programs

Elementary

Secondary

Federal

Total

500 Other Purchased Services

561 Tuition To Other School Districts Within the State

976.11

976.11

**Total Other Purchased Services**

**\$976.11**

**\$976.11**

**Total 1441 Adjudicated / Court-Placed Programs**

**\$976.11**

**\$976.11**

General Fund (10)

2000 Support Services

Total

100 Personnel Services – Salaries

100 Personnel Services – Salaries 7,922,125.34

Total Personnel Services – Salaries \$7,922,125.34

200 Personnel Services – Employee Benefits

210 Group Insurance – Contracted Provider 1,266,522.83

220 Social Security Contributions 585,519.86

230 PSERS Retirement Contributions 2,634,804.93

240 Tuition Reimbursement 55,696.58

250 Unemployment Compensation 32,837.61

260 Workers' Compensation 33,199.27

280 Other Post-Employment Benefits (OPEB) 0.90

Total Personnel Services – Employee Benefits \$4,608,581.98

300 Purchased Professional and Technical Services

310 Official / Administrative Services 11,250.00

322 Professional Educational Services – Ius 6,201.70

329 Professional Educational Services – Other 38,276.87

330 Other Professional Services 355,773.07

340 Technical Services 40,628.52

Total Purchased Professional and Technical Services \$452,130.16

400 Purchased Property Services

410 Cleaning Services 100,159.11

420 Utility Services 691,925.38

430 Repairs and Maintenance Services 337,706.62

Total Purchased Property Services \$1,129,791.11

500 Other Purchased Services

516 Student Transportation Services From the IU 110,421.50

521 Fire Insurance 14,603.00

522 Automotive Liability Insurance 44,348.00

523 General Property and Liability Insurance 108,770.00

529 Other Insurance 293.80

530 Communications 126,171.88

580 Travel 40,919.64

595 IU Payments By Withholding 41,103.92

Total Other Purchased Services \$486,631.74

600 Supplies

610 General Supplies 553,960.70

620 Energy 410,358.66

640 Books and Periodicals 407,045.30

Total Supplies \$1,371,364.66

700 Property

752 Capital Equipment – Original and Additional 88,447.04

758 Capitalized Technology Software - Original 80,931.21

762 Capitalized Equipment - Replacement 106,572.32

LEA : 103027503 Plum Borough SD

Printed 11/18/2020 1:45:21 PM

**General Fund (10)**

**2000 Support Services**

**Total**

**700 Property**

768 Capitalized Technology Software - Replacement

42,027.48

**Total Property**

**\$317,978.05**

**800 Other Objects**

810 Dues and Fees

491,914.98

**Total Other Objects**

**\$491,914.98**

**Total 2000 Support Services**

**\$16,780,518.02**

LEA : 103027503 Plum Borough SD

Printed 11/18/2020 1:45:21 PM

**General Fund (10)**

**2100 Support Services – Students**

**100 Personnel Services – Salaries**

	<u>Elementary</u>	<u>Secondary</u>	<u>Federal</u>	<u>Total</u>
100 Personnel Services – Salaries	370,425.40	681,476.25		1,051,901.65
<b>Total Personnel Services – Salaries</b>	<b>\$370,425.40</b>	<b>\$681,476.25</b>		<b>\$1,051,901.65</b>

**200 Personnel Services – Employee Benefits**

210 Group Insurance – Contracted Provider	59,196.19	124,364.41		183,560.60
220 Social Security Contributions	27,498.66	50,769.25		78,267.91
230 PSERS Retirement Contributions	122,581.89	231,469.74		354,051.63
250 Unemployment Compensation	98.23	(324.89)		(226.66)
260 Workers' Compensation	1,803.14	3,332.02		5,135.16
<b>Total Personnel Services – Employee Benefits</b>	<b>\$211,178.11</b>	<b>\$409,610.53</b>		<b>\$620,788.64</b>

**300 Purchased Professional and Technical Services**

322 Professional Educational Services – lus	3,162.87	3,038.83		6,201.70
330 Other Professional Services	71,361.75	68,563.25		139,925.00
<b>Total Purchased Professional and Technical Services</b>	<b>\$74,524.62</b>	<b>\$71,602.08</b>		<b>\$146,126.70</b>

**500 Other Purchased Services**

580 Travel	174.95	92.18		267.13
<b>Total Other Purchased Services</b>	<b>\$174.95</b>	<b>\$92.18</b>		<b>\$267.13</b>

**600 Supplies**

610 General Supplies	248.09	238.37		486.46
<b>Total Supplies</b>	<b>\$248.09</b>	<b>\$238.37</b>		<b>\$486.46</b>

**800 Other Objects**

810 Dues and Fees	252.45	242.55		495.00
<b>Total Other Objects</b>	<b>\$252.45</b>	<b>\$242.55</b>		<b>\$495.00</b>

**Total 2100 Support Services – Students**

	<b>\$656,803.62</b>	<b>\$1,163,261.96</b>		<b>\$1,820,065.58</b>
--	---------------------	-----------------------	--	-----------------------

General Fund (10)

2110 Supervision of Student Services	<u>Elementary</u>	<u>Secondary</u>	<u>Federal</u>	<u>Total</u>
300 <u>Purchased Professional and Technical Services</u>				
330 Other Professional Services	71,361.75	68,563.25		139,925.00
<b>Total Purchased Professional and Technical Services</b>	<b>\$71,361.75</b>	<b>\$68,563.25</b>		<b>\$139,925.00</b>
<b>Total 2110 Supervision of Student Services</b>	<b>\$71,361.75</b>	<b>\$68,563.25</b>		<b>\$139,925.00</b>

General Fund (10)

	<u>Elementary</u>	<u>Secondary</u>	<u>Federal</u>	<u>Total</u>
<b>2111 Supervision of Student Services – Head of Component</b>				
<b>300 <u>Purchased Professional and Technical Services</u></b>				
330 Other Professional Services	71,361.75	68,563.25		139,925.00
<b>Total Purchased Professional and Technical Services</b>	<b>\$71,361.75</b>	<b>\$68,563.25</b>		<b>\$139,925.00</b>
<b>Total 2111 Supervision of Student Services – Head of Component</b>	<b>\$71,361.75</b>	<b>\$68,563.25</b>		<b>\$139,925.00</b>

**General Fund (10)**

	<u>Elementary</u>	<u>Secondary</u>	<u>Federal</u>	<u>Total</u>
<b>2120 Guidance Services</b>				
<b>100 Personnel Services – Salaries</b>				
100 Personnel Services – Salaries	235,150.00	551,505.77		786,655.77
<b>Total Personnel Services – Salaries</b>	<b>\$235,150.00</b>	<b>\$551,505.77</b>		<b>\$786,655.77</b>
<b>200 Personnel Services – Employee Benefits</b>				
210 Group Insurance – Contracted Provider	20,612.12	87,293.44		107,905.56
220 Social Security Contributions	17,784.00	41,435.55		59,219.55
230 PSERS Retirement Contributions	77,066.83	187,739.60		264,806.43
250 Unemployment Compensation	(111.29)	(526.19)		(637.48)
260 Workers' Compensation	1,150.57	2,705.04		3,855.61
<b>Total Personnel Services – Employee Benefits</b>	<b>\$116,502.23</b>	<b>\$318,647.44</b>		<b>\$435,149.67</b>
<b>500 Other Purchased Services</b>				
580 Travel	79.00			79.00
<b>Total Other Purchased Services</b>	<b>\$79.00</b>			<b>\$79.00</b>
<b>Total 2120 Guidance Services</b>	<b>\$351,731.23</b>	<b>\$870,153.21</b>		<b>\$1,221,884.44</b>

**General Fund (10)**

**2140 Psychological Services**

	<u>Elementary</u>	<u>Secondary</u>	<u>Federal</u>	<u>Total</u>
<b>100 Personnel Services – Salaries</b>				
100 Personnel Services – Salaries	135,275.40	129,970.48		265,245.88
<b>Total Personnel Services – Salaries</b>	<b>\$135,275.40</b>	<b>\$129,970.48</b>		<b>\$265,245.88</b>
<b>200 Personnel Services – Employee Benefits</b>				
210 Group Insurance – Contracted Provider	38,584.07	37,070.97		75,655.04
220 Social Security Contributions	9,714.66	9,333.70		19,048.36
230 PSERS Retirement Contributions	45,515.06	43,730.14		89,245.20
250 Unemployment Compensation	209.52	201.30		410.82
260 Workers' Compensation	652.57	626.98		1,279.55
<b>Total Personnel Services – Employee Benefits</b>	<b>\$94,675.88</b>	<b>\$90,963.09</b>		<b>\$185,638.97</b>
<b>300 Purchased Professional and Technical Services</b>				
322 Professional Educational Services – lus	3,162.87	3,038.83		6,201.70
<b>Total Purchased Professional and Technical Services</b>	<b>\$3,162.87</b>	<b>\$3,038.83</b>		<b>\$6,201.70</b>
<b>500 Other Purchased Services</b>				
580 Travel	95.95	92.18		188.13
<b>Total Other Purchased Services</b>	<b>\$95.95</b>	<b>\$92.18</b>		<b>\$188.13</b>
<b>600 Supplies</b>				
610 General Supplies	248.09	238.37		486.46
<b>Total Supplies</b>	<b>\$248.09</b>	<b>\$238.37</b>		<b>\$486.46</b>
<b>800 Other Objects</b>				
810 Dues and Fees	252.45	242.55		495.00
<b>Total Other Objects</b>	<b>\$252.45</b>	<b>\$242.55</b>		<b>\$495.00</b>
<b>Total 2140 Psychological Services</b>	<b>\$233,710.64</b>	<b>\$224,545.50</b>		<b>\$458,256.14</b>



**General Fund (10)**

	<u>Elementary</u>	<u>Secondary</u>	<u>Federal</u>	<u>Total</u>
<b>2200 Support Services – Instructional Staff</b>				
<b>100 Personnel Services – Salaries</b>				
100 Personnel Services – Salaries	196,359.02	176,184.42		372,543.44
<b>Total Personnel Services – Salaries</b>	<b>\$196,359.02</b>	<b>\$176,184.42</b>		<b>\$372,543.44</b>
<b>200 Personnel Services – Employee Benefits</b>				
210 Group Insurance – Contracted Provider	29,181.62	28,491.20		57,672.82
220 Social Security Contributions	14,763.20	13,224.72		27,987.92
230 PSERS Retirement Contributions	67,331.50	60,413.66		127,745.16
240 Tuition Reimbursement	25,355.36	24,361.03		49,716.39
250 Unemployment Compensation	428.37	(236.87)		191.50
260 Workers' Compensation	961.46	864.23		1,825.69
<b>Total Personnel Services – Employee Benefits</b>	<b>\$138,021.51</b>	<b>\$127,117.97</b>		<b>\$265,139.48</b>
<b>400 Purchased Property Services</b>				
430 Repairs and Maintenance Services		9,513.75		9,513.75
<b>Total Purchased Property Services</b>		<b>\$9,513.75</b>		<b>\$9,513.75</b>
<b>500 Other Purchased Services</b>				
580 Travel	13,237.34	12,718.23		25,955.57
<b>Total Other Purchased Services</b>	<b>\$13,237.34</b>	<b>\$12,718.23</b>		<b>\$25,955.57</b>
<b>600 Supplies</b>				
610 General Supplies	571.20	548.80		1,120.00
640 Books and Periodicals		10,593.62		10,593.62
<b>Total Supplies</b>	<b>\$571.20</b>	<b>\$11,142.42</b>		<b>\$11,713.62</b>
<b>Total 2200 Support Services – Instructional Staff</b>	<b>\$348,189.07</b>	<b>\$336,676.79</b>		<b>\$684,865.86</b>

**General Fund (10)**

	<u>Elementary</u>	<u>Secondary</u>	<u>Federal</u>	<u>Total</u>
<b>2220 Technology Support Services</b>				
<b>100 Personnel Services – Salaries</b>				
100 Personnel Services – Salaries	14,673.68	14,098.24		28,771.92
<b>Total Personnel Services – Salaries</b>	<b>\$14,673.68</b>	<b>\$14,098.24</b>		<b>\$28,771.92</b>
<b>200 Personnel Services – Employee Benefits</b>				
210 Group Insurance – Contracted Provider	9,408.76	9,039.76		18,448.52
220 Social Security Contributions	1,014.09	974.32		1,988.41
230 PSERS Retirement Contributions	5,031.62	4,834.30		9,865.92
250 Unemployment Compensation	154.98	148.90		303.88
260 Workers' Compensation	70.79	68.02		138.81
<b>Total Personnel Services – Employee Benefits</b>	<b>\$15,680.24</b>	<b>\$15,065.30</b>		<b>\$30,745.54</b>
<b>400 Purchased Property Services</b>				
430 Repairs and Maintenance Services		9,513.75		9,513.75
<b>Total Purchased Property Services</b>		<b>\$9,513.75</b>		<b>\$9,513.75</b>
<b>Total 2220 Technology Support Services</b>	<b>\$30,353.92</b>	<b>\$38,677.29</b>		<b>\$69,031.21</b>

**General Fund (10)**

	<u>Elementary</u>	<u>Secondary</u>	<u>Federal</u>	<u>Total</u>
<b>2250 School Library Services</b>				
<b>100 Personnel Services – Salaries</b>				
100 Personnel Services – Salaries	180,632.88	161,075.00		341,707.88
<b>Total Personnel Services – Salaries</b>	<b>\$180,632.88</b>	<b>\$161,075.00</b>		<b>\$341,707.88</b>
<b>200 Personnel Services – Employee Benefits</b>				
210 Group Insurance – Contracted Provider	19,772.86	19,451.44		39,224.30
220 Social Security Contributions	13,670.85	12,175.20		25,846.05
230 PSERS Retirement Contributions	61,938.99	55,232.63		117,171.62
250 Unemployment Compensation	278.50	(380.86)		(102.36)
260 Workers' Compensation	885.28	791.04		1,676.32
<b>Total Personnel Services – Employee Benefits</b>	<b>\$96,546.48</b>	<b>\$87,269.45</b>		<b>\$183,815.93</b>
<b>600 Supplies</b>				
640 Books and Periodicals		10,593.62		10,593.62
<b>Total Supplies</b>		<b>\$10,593.62</b>		<b>\$10,593.62</b>
<b>Total 2250 School Library Services</b>	<b>\$277,179.36</b>	<b>\$258,938.07</b>		<b>\$536,117.43</b>

**General Fund (10)**

**2270 Instructional Staff Professional Development Services**

	<u>Elementary</u>	<u>Secondary</u>	<u>Federal</u>	<u>Total</u>
<b>100 Personnel Services – Salaries</b>				
100 Personnel Services – Salaries	1,052.46	1,011.18		2,063.64
<b>Total Personnel Services – Salaries</b>	<b>\$1,052.46</b>	<b>\$1,011.18</b>		<b>\$2,063.64</b>
<b>200 Personnel Services – Employee Benefits</b>				
220 Social Security Contributions	78.26	75.20		153.46
230 PSERS Retirement Contributions	360.89	346.73		707.62
240 Tuition Reimbursement	25,355.36	24,361.03		49,716.39
250 Unemployment Compensation	(5.11)	(4.91)		(10.02)
260 Workers' Compensation	5.39	5.17		10.56
<b>Total Personnel Services – Employee Benefits</b>	<b>\$25,794.79</b>	<b>\$24,783.22</b>		<b>\$50,578.01</b>
<b>500 Other Purchased Services</b>				
580 Travel	13,237.34	12,718.23		25,955.57
<b>Total Other Purchased Services</b>	<b>\$13,237.34</b>	<b>\$12,718.23</b>		<b>\$25,955.57</b>
<b>600 Supplies</b>				
610 General Supplies	571.20	548.80		1,120.00
<b>Total Supplies</b>	<b>\$571.20</b>	<b>\$548.80</b>		<b>\$1,120.00</b>
<b>Total 2270 Instructional Staff Professional Development Services</b>	<b>\$40,655.79</b>	<b>\$39,061.43</b>		<b>\$79,717.22</b>

LEA : 103027503 Plum Borough SD

Printed 11/18/2020 1:45:21 PM

**General Fund (10)**

	<u>Elementary</u>	<u>Secondary</u>	<u>Federal</u>	<u>Total</u>
<b>2300 Support Services – Administration</b>				
<b>100 Personnel Services – Salaries</b>				
100 Personnel Services – Salaries	483,969.42	700,594.15		1,816,039.64
<b>Total Personnel Services – Salaries</b>	<b>\$483,969.42</b>	<b>\$700,594.15</b>		<b>\$1,816,039.64</b>
<b>200 Personnel Services – Employee Benefits</b>				
210 Group Insurance – Contracted Provider	85,202.76	135,934.00		311,260.78
220 Social Security Contributions	36,034.92	52,041.05		133,933.59
230 PSERS Retirement Contributions	165,952.78	232,695.28		586,026.28
250 Unemployment Compensation	(860.12)	(4.94)		(2,898.05)
260 Workers' Compensation	1,486.58	4,230.34		8,765.26
<b>Total Personnel Services – Employee Benefits</b>	<b>\$287,816.92</b>	<b>\$424,895.73</b>		<b>\$1,037,087.86</b>
<b>300 Purchased Professional and Technical Services</b>				
329 Professional Educational Services – Other	5,267.31	5,060.74		10,328.05
330 Other Professional Services				184,585.53
340 Technical Services				19,250.44
<b>Total Purchased Professional and Technical Services</b>	<b>\$5,267.31</b>	<b>\$5,060.74</b>		<b>\$214,164.02</b>
<b>500 Other Purchased Services</b>				
530 Communications	4,876.95	24,111.54		33,834.14
580 Travel	335.23	155.72		4,797.47
<b>Total Other Purchased Services</b>	<b>\$5,212.18</b>	<b>\$24,267.26</b>		<b>\$38,631.61</b>
<b>600 Supplies</b>				
610 General Supplies	1,679.97	106.66		41,966.61
<b>Total Supplies</b>	<b>\$1,679.97</b>	<b>\$106.66</b>		<b>\$41,966.61</b>
<b>800 Other Objects</b>				
810 Dues and Fees	1,190.00	2,975.00		487,432.00
<b>Total Other Objects</b>	<b>\$1,190.00</b>	<b>\$2,975.00</b>		<b>\$487,432.00</b>
<b>Total 2300 Support Services – Administration</b>	<b>\$785,135.80</b>	<b>\$1,157,899.54</b>		<b>\$3,635,321.74</b>

General Fund (10)

2310 Board Services

Elementary

Secondary

Federal

Total

100 Personnel Services – Salaries

100 Personnel Services – Salaries

6,000.00

**Total Personnel Services – Salaries**

**\$6,000.00**

200 Personnel Services – Employee Benefits

220 Social Security Contributions

430.80

230 PSERS Retirement Contributions

2,057.29

250 Unemployment Compensation

18.48

260 Workers' Compensation

28.84

**Total Personnel Services – Employee Benefits**

**\$2,535.41**

300 Purchased Professional and Technical Services

330 Other Professional Services

95,624.14

**Total Purchased Professional and Technical Services**

**\$95,624.14**

500 Other Purchased Services

530 Communications

4,845.65

580 Travel

806.71

**Total Other Purchased Services**

**\$5,652.36**

600 Supplies

610 General Supplies

1,598.70

**Total Supplies**

**\$1,598.70**

**Total 2310 Board Services**

**\$111,410.61**

**General Fund (10)**

**2330 Tax Assessment and Collection Services**

Elementary

Secondary

Federal

Total

**100 Personnel Services – Salaries**

100 Personnel Services – Salaries

63,563.92

**Total Personnel Services – Salaries**

**\$63,563.92**

**200 Personnel Services – Employee Benefits**

220 Social Security Contributions

4,862.70

250 Unemployment Compensation

(543.85)

260 Workers' Compensation

306.86

**Total Personnel Services – Employee Benefits**

**\$4,625.71**

**300 Purchased Professional and Technical Services**

340 Technical Services

19,250.44

**Total Purchased Professional and Technical Services**

**\$19,250.44**

**600 Supplies**

610 General Supplies

9,100.94

**Total Supplies**

**\$9,100.94**

**Total 2330 Tax Assessment and Collection Services**

**\$96,541.01**

General Fund (10)

2340 Staff Relations and Negotiations Services

Elementary

Secondary

Federal

Total

100 Personnel Services – Salaries

100 Personnel Services – Salaries

191,451.81

**Total Personnel Services – Salaries**

**\$191,451.81**

200 Personnel Services – Employee Benefits

210 Group Insurance – Contracted Provider

36,562.68

220 Social Security Contributions

14,213.52

230 PSERS Retirement Contributions

64,770.14

250 Unemployment Compensation

(538.03)

260 Workers' Compensation

924.23

**Total Personnel Services – Employee Benefits**

**\$115,932.54**

300 Purchased Professional and Technical Services

330 Other Professional Services

2,118.00

**Total Purchased Professional and Technical Services**

**\$2,118.00**

**Total 2340 Staff Relations and Negotiations Services**

**\$309,502.35**



General Fund (10)

2350 Legal and Accounting Services

Elementary

Secondary

Federal

Total

300 Purchased Professional and Technical Services

330 Other Professional Services

86,843.39

**Total Purchased Professional and Technical Services**

**\$86,843.39**

**Total 2350 Legal and Accounting Services**

**\$86,843.39**

**General Fund (10)**

	<u>Elementary</u>	<u>Secondary</u>	<u>Federal</u>	<u>Total</u>
<b>2360 Office of the Superintendent / Executive Director Services</b>				
<b>100 Personnel Services – Salaries</b>				
100 Personnel Services – Salaries				370,460.34
<b>Total Personnel Services – Salaries</b>				<b>\$370,460.34</b>
<b>200 Personnel Services – Employee Benefits</b>				
210 Group Insurance – Contracted Provider				53,561.34
220 Social Security Contributions				26,350.60
230 PSERS Retirement Contributions				120,550.79
250 Unemployment Compensation				(969.59)
260 Workers' Compensation				1,788.41
<b>Total Personnel Services – Employee Benefits</b>				<b>\$201,281.55</b>
<b>500 Other Purchased Services</b>				
530 Communications	4,876.95	4,685.70		9,562.65
580 Travel				3,499.81
<b>Total Other Purchased Services</b>	<b>\$4,876.95</b>	<b>\$4,685.70</b>		<b>\$13,062.46</b>
<b>600 Supplies</b>				
610 General Supplies				29,480.34
<b>Total Supplies</b>				<b>\$29,480.34</b>
<b>800 Other Objects</b>				
810 Dues and Fees				7,455.00
<b>Total Other Objects</b>				<b>\$7,455.00</b>
<b>Total 2360 Office of the Superintendent / Executive Director Services</b>	<b>\$4,876.95</b>	<b>\$4,685.70</b>		<b>\$621,739.69</b>

**General Fund (10)**

	<u>Elementary</u>	<u>Secondary</u>	<u>Federal</u>	<u>Total</u>
<b>2380 Office of the Principal Services</b>				
<b>100 Personnel Services – Salaries</b>				
100 Personnel Services – Salaries	483,969.42	700,594.15		1,184,563.57
<b>Total Personnel Services – Salaries</b>	<b>\$483,969.42</b>	<b>\$700,594.15</b>		<b>\$1,184,563.57</b>
<b>200 Personnel Services – Employee Benefits</b>				
210 Group Insurance – Contracted Provider	85,202.76	135,934.00		221,136.76
220 Social Security Contributions	36,034.92	52,041.05		88,075.97
230 PSERS Retirement Contributions	165,952.78	232,695.28		398,648.06
250 Unemployment Compensation	(860.12)	(4.94)		(865.06)
260 Workers' Compensation	1,486.58	4,230.34		5,716.92
<b>Total Personnel Services – Employee Benefits</b>	<b>\$287,816.92</b>	<b>\$424,895.73</b>		<b>\$712,712.65</b>
<b>300 Purchased Professional and Technical Services</b>				
329 Professional Educational Services – Other	5,267.31	5,060.74		10,328.05
<b>Total Purchased Professional and Technical Services</b>	<b>\$5,267.31</b>	<b>\$5,060.74</b>		<b>\$10,328.05</b>
<b>500 Other Purchased Services</b>				
530 Communications		19,425.84		19,425.84
580 Travel	335.23	155.72		490.95
<b>Total Other Purchased Services</b>	<b>\$335.23</b>	<b>\$19,581.56</b>		<b>\$19,916.79</b>
<b>600 Supplies</b>				
610 General Supplies	1,679.97	106.66		1,786.63
<b>Total Supplies</b>	<b>\$1,679.97</b>	<b>\$106.66</b>		<b>\$1,786.63</b>
<b>800 Other Objects</b>				
810 Dues and Fees	1,190.00	2,975.00		4,165.00
<b>Total Other Objects</b>	<b>\$1,190.00</b>	<b>\$2,975.00</b>		<b>\$4,165.00</b>
<b>Total 2380 Office of the Principal Services</b>	<b>\$780,258.85</b>	<b>\$1,153,213.84</b>		<b>\$1,933,472.69</b>

LEA : 103027503 Plum Borough SD

Printed 11/18/2020 1:45:21 PM

General Fund (10)

2390 Other Administration Services

Elementary

Secondary

Federal

Total

800 Other Objects

810 Dues and Fees

475,812.00

**Total Other Objects**

**\$475,812.00**

**Total 2390 Other Administration Services**

**\$475,812.00**

General Fund (10)

	<u>Elementary</u>	<u>Secondary</u>	<u>Federal</u>	<u>Total</u>
<b>2400 Support Services – Pupil Health</b>				
<b>100 Personnel Services – Salaries</b>				
100 Personnel Services – Salaries				392,677.77
<b>Total Personnel Services – Salaries</b>				<b>\$392,677.77</b>
<b>200 Personnel Services – Employee Benefits</b>				
210 Group Insurance – Contracted Provider				31,381.87
220 Social Security Contributions				29,785.95
230 PSERS Retirement Contributions				133,465.66
250 Unemployment Compensation				1,867.56
260 Workers' Compensation				1,915.37
<b>Total Personnel Services – Employee Benefits</b>				<b>\$198,416.41</b>
<b>300 Purchased Professional and Technical Services</b>				
310 Official / Administrative Services				11,250.00
329 Professional Educational Services – Other				10,863.82
<b>Total Purchased Professional and Technical Services</b>				<b>\$22,113.82</b>
<b>400 Purchased Property Services</b>				
430 Repairs and Maintenance Services				1,609.25
<b>Total Purchased Property Services</b>				<b>\$1,609.25</b>
<b>600 Supplies</b>				
610 General Supplies				9,539.97
<b>Total Supplies</b>				<b>\$9,539.97</b>
<b>Total 2400 Support Services – Pupil Health</b>				<b>\$624,357.22</b>

General Fund (10)

2420 Medical Services

Elementary

Secondary

Federal

Total

300 Purchased Professional and Technical Services

310 Official / Administrative Services

11,250.00

**Total Purchased Professional and Technical Services**

**\$11,250.00**

400 Purchased Property Services

430 Repairs and Maintenance Services

1,609.25

**Total Purchased Property Services**

**\$1,609.25**

600 Supplies

610 General Supplies

9,539.97

**Total Supplies**

**\$9,539.97**

**Total 2420 Medical Services**

**\$22,399.22**

General Fund (10)

2440 Nursing Services

Elementary

Secondary

Federal

Total

100 Personnel Services – Salaries

100 Personnel Services – Salaries

392,677.77

**Total Personnel Services – Salaries**

**\$392,677.77**

200 Personnel Services – Employee Benefits

210 Group Insurance – Contracted Provider

31,381.87

220 Social Security Contributions

29,785.95

230 PSERS Retirement Contributions

133,465.66

250 Unemployment Compensation

1,867.56

260 Workers' Compensation

1,915.37

**Total Personnel Services – Employee Benefits**

**\$198,416.41**

300 Purchased Professional and Technical Services

329 Professional Educational Services – Other

10,863.82

**Total Purchased Professional and Technical Services**

**\$10,863.82**

**Total 2440 Nursing Services**

**\$601,958.00**

General Fund (10)

2500 Support Services – Business

Elementary                      Secondary                      Federal                      Total

100 Personnel Services – Salaries

100 Personnel Services – Salaries 268,970.41

**Total Personnel Services – Salaries \$268,970.41**

200 Personnel Services – Employee Benefits

210 Group Insurance – Contracted Provider 60,477.84

220 Social Security Contributions 17,540.28

230 PSERS Retirement Contributions 91,070.11

250 Unemployment Compensation 796.62

260 Workers' Compensation 1,289.99

**Total Personnel Services – Employee Benefits \$171,174.84**

500 Other Purchased Services

580 Travel 421.89

**Total Other Purchased Services \$421.89**

600 Supplies

610 General Supplies 3,204.01

**Total Supplies \$3,204.01**

800 Other Objects

810 Dues and Fees 63.00

**Total Other Objects \$63.00**

**Total 2500 Support Services – Business \$443,834.15**



**General Fund (10)**

**2510 Fiscal Services**

Elementary                      Secondary                      Federal                      Total

<b>100</b>	<b><u>Personnel Services – Salaries</u></b>				
	100 Personnel Services – Salaries				268,970.41
<b>Total Personnel Services – Salaries</b>					<b>\$268,970.41</b>
<b>200</b>	<b><u>Personnel Services – Employee Benefits</u></b>				
	210 Group Insurance – Contracted Provider				60,477.84
	220 Social Security Contributions				17,540.28
	230 PSERS Retirement Contributions				91,070.11
	250 Unemployment Compensation				796.62
	260 Workers' Compensation				1,289.99
<b>Total Personnel Services – Employee Benefits</b>					<b>\$171,174.84</b>
<b>500</b>	<b><u>Other Purchased Services</u></b>				
	580 Travel				421.89
<b>Total Other Purchased Services</b>					<b>\$421.89</b>
<b>600</b>	<b><u>Supplies</u></b>				
	610 General Supplies				3,204.01
<b>Total Supplies</b>					<b>\$3,204.01</b>
<b>800</b>	<b><u>Other Objects</u></b>				
	810 Dues and Fees				63.00
<b>Total Other Objects</b>					<b>\$63.00</b>
<b>Total 2510 Fiscal Services</b>					<b>\$443,834.15</b>

General Fund (10)

2511 Supervision of Fiscal Services - Head of Component

Elementary

Secondary

Federal

Total

100 Personnel Services – Salaries

100 Personnel Services – Salaries

170,472.63

**Total Personnel Services – Salaries**

**\$170,472.63**

200 Personnel Services – Employee Benefits

210 Group Insurance – Contracted Provider

36,611.40

220 Social Security Contributions

10,275.29

230 PSERS Retirement Contributions

58,455.07

250 Unemployment Compensation

(361.29)

260 Workers' Compensation

822.85

**Total Personnel Services – Employee Benefits**

**\$105,803.32**

500 Other Purchased Services

580 Travel

421.89

**Total Other Purchased Services**

**\$421.89**

600 Supplies

610 General Supplies

3,204.01

**Total Supplies**

**\$3,204.01**

800 Other Objects

810 Dues and Fees

63.00

**Total Other Objects**

**\$63.00**

**Total 2511 Supervision of Fiscal Services - Head of Component**

**\$279,964.85**

General Fund (10)

2513 Receiving and Disbursing Funds Services

Elementary

Secondary

Federal

Total

100 Personnel Services – Salaries

100 Personnel Services – Salaries

41,266.00

**Total Personnel Services – Salaries**

**\$41,266.00**

200 Personnel Services – Employee Benefits

210 Group Insurance – Contracted Provider

19,105.52

220 Social Security Contributions

2,938.85

230 PSERS Retirement Contributions

14,150.13

250 Unemployment Compensation

175.82

260 Workers' Compensation

199.27

**Total Personnel Services – Employee Benefits**

**\$36,569.59**

**Total 2513 Receiving and Disbursing Funds Services**

**\$77,835.59**

General Fund (10)

2514 Payroll Services

100 Personnel Services – Salaries

100 Personnel Services – Salaries

Elementary

Secondary

Federal

Total

57,231.78

**Total Personnel Services – Salaries**

**\$57,231.78**

200 Personnel Services – Employee Benefits

210 Group Insurance – Contracted Provider

4,760.92

220 Social Security Contributions

4,326.14

230 PSERS Retirement Contributions

18,464.91

250 Unemployment Compensation

982.09

260 Workers' Compensation

267.87

**Total Personnel Services – Employee Benefits**

**\$28,801.93**

**Total 2514 Payroll Services**

**\$86,033.71**

**General Fund (10)**

**2600 Operation and Maintenance of Plant Services**

Elementary                                      Secondary                                      Federal                                      Total

<b>100 Personnel Services – Salaries</b>				
100 Personnel Services – Salaries				1,971,191.90
<b>Total Personnel Services – Salaries</b>				<b>\$1,971,191.90</b>
<b>200 Personnel Services – Employee Benefits</b>				
210 Group Insurance – Contracted Provider				402,851.10
220 Social Security Contributions				146,792.53
230 PSERS Retirement Contributions				656,604.17
250 Unemployment Compensation				13,559.98
260 Workers' Compensation				6,182.27
280 Other Post-Employment Benefits (OPEB)				0.90
<b>Total Personnel Services – Employee Benefits</b>				<b>\$1,225,990.95</b>
<b>300 Purchased Professional and Technical Services</b>				
329 Professional Educational Services – Other				17,085.00
330 Other Professional Services				4,264.12
340 Technical Services				698.44
<b>Total Purchased Professional and Technical Services</b>				<b>\$22,047.56</b>
<b>400 Purchased Property Services</b>				
410 Cleaning Services				100,159.11
420 Utility Services				691,925.38
430 Repairs and Maintenance Services				235,382.20
<b>Total Purchased Property Services</b>				<b>\$1,027,466.69</b>
<b>500 Other Purchased Services</b>				
521 Fire Insurance				14,603.00
523 General Property and Liability Insurance				108,770.00
529 Other Insurance				293.80
530 Communications				70,647.74
580 Travel				6,288.00
<b>Total Other Purchased Services</b>				<b>\$200,602.54</b>
<b>600 Supplies</b>				
610 General Supplies	164,209.90	157,770.30		321,980.20
620 Energy				188,250.01
<b>Total Supplies</b>	<b>\$164,209.90</b>	<b>\$157,770.30</b>		<b>\$510,230.21</b>
<b>700 Property</b>				
752 Capital Equipment – Original and Additional				88,414.97
762 Capitalized Equipment - Replacement				106,572.32
<b>Total Property</b>				<b>\$194,987.29</b>
<b>800 Other Objects</b>				
810 Dues and Fees				3,924.98
<b>Total Other Objects</b>				<b>\$3,924.98</b>
<b>Total 2600 Operation and Maintenance of Plant Services</b>	<b>\$164,209.90</b>	<b>\$157,770.30</b>		<b>\$5,156,442.12</b>

General Fund (10)

	<u>Elementary</u>	<u>Secondary</u>	<u>Federal</u>	<u>Total</u>
<b>2610 Supervision of Operation and Maintenance of Plant Services</b>				
<b>100 Personnel Services – Salaries</b>				
100 Personnel Services – Salaries				98,787.51
<b>Total Personnel Services – Salaries</b>				<b>\$98,787.51</b>
<b>200 Personnel Services – Employee Benefits</b>				
210 Group Insurance – Contracted Provider				23,034.90
220 Social Security Contributions				7,280.86
230 PSERS Retirement Contributions				33,874.26
250 Unemployment Compensation				804.81
260 Workers' Compensation				476.79
<b>Total Personnel Services – Employee Benefits</b>				<b>\$65,471.62</b>
<b>Total 2610 Supervision of Operation and Maintenance of Plant Services</b>				<b>\$164,259.13</b>

General Fund (10)

2611 Supervision of Operation and Maintenance of Plant Services – Head of Component

Elementary

Secondary

Federal

Total

100 Personnel Services – Salaries

100 Personnel Services – Salaries

98,787.51

**Total Personnel Services – Salaries**

**\$98,787.51**

200 Personnel Services – Employee Benefits

210 Group Insurance – Contracted Provider

23,034.90

220 Social Security Contributions

7,280.86

230 PSERS Retirement Contributions

33,874.26

250 Unemployment Compensation

804.81

260 Workers' Compensation

476.79

**Total Personnel Services – Employee Benefits**

**\$65,471.62**

**Total 2611 Supervision of Operation and Maintenance of Plant Services – Head of Component**

**\$164,259.13**

**General Fund (10)**

**2620 Operation of Buildings Services**

**100 Personnel Services – Salaries**

	<u>Elementary</u>	<u>Secondary</u>	<u>Federal</u>	<u>Total</u>
100 Personnel Services – Salaries				1,540,959.47

<b>Total Personnel Services – Salaries</b>				<b>\$1,540,959.47</b>
--	--	--	--	-----------------------

**200 Personnel Services – Employee Benefits**

210 Group Insurance – Contracted Provider				379,816.20
---	--	--	--	------------

220 Social Security Contributions				113,946.86
-----------------------------------	--	--	--	------------

230 PSERS Retirement Contributions				518,636.65
------------------------------------	--	--	--	------------

250 Unemployment Compensation				8,646.02
-------------------------------	--	--	--	----------

260 Workers' Compensation				7,509.59
---------------------------	--	--	--	----------

280 Other Post-Employment Benefits (OPEB)				0.90
---	--	--	--	------

<b>Total Personnel Services – Employee Benefits</b>				<b>\$1,028,556.22</b>
---	--	--	--	-----------------------

**400 Purchased Property Services**

410 Cleaning Services				39,334.11
-----------------------	--	--	--	-----------

420 Utility Services				691,925.38
----------------------	--	--	--	------------

430 Repairs and Maintenance Services				202,685.31
--------------------------------------	--	--	--	------------

<b>Total Purchased Property Services</b>				<b>\$933,944.80</b>
--	--	--	--	---------------------

**500 Other Purchased Services**

521 Fire Insurance				14,603.00
--------------------	--	--	--	-----------

523 General Property and Liability Insurance				108,770.00
--	--	--	--	------------

529 Other Insurance				293.80
---------------------	--	--	--	--------

530 Communications				70,647.74
--------------------	--	--	--	-----------

580 Travel				3,964.82
------------	--	--	--	----------

<b>Total Other Purchased Services</b>				<b>\$198,279.36</b>
---------------------------------------	--	--	--	---------------------

**600 Supplies**

610 General Supplies	154,549.91	148,489.13		303,039.04
----------------------	------------	------------	--	------------

620 Energy				169,821.61
------------	--	--	--	------------

<b>Total Supplies</b>	<b>\$154,549.91</b>	<b>\$148,489.13</b>		<b>\$472,860.65</b>
-----------------------	---------------------	---------------------	--	---------------------

**700 Property**

752 Capital Equipment – Original and Additional				88,414.97
---	--	--	--	-----------

762 Capitalized Equipment - Replacement				106,572.32
---	--	--	--	------------

<b>Total Property</b>				<b>\$194,987.29</b>
-----------------------	--	--	--	---------------------

**800 Other Objects**

810 Dues and Fees				1,654.45
-------------------	--	--	--	----------

<b>Total Other Objects</b>				<b>\$1,654.45</b>
----------------------------	--	--	--	-------------------

<b>Total 2620 Operation of Buildings Services</b>	<b>\$154,549.91</b>	<b>\$148,489.13</b>		<b>\$4,371,242.24</b>
---	---------------------	---------------------	--	-----------------------



LEA : 103027503 Plum Borough SD

Printed 11/18/2020 1:45:21 PM

General Fund (10)

2630 Care and Upkeep of Grounds Services

Elementary

Secondary

Federal

Total

400 Purchased Property Services

410 Cleaning Services

60,825.00

**Total Purchased Property Services**

**\$60,825.00**

**Total 2630 Care and Upkeep of Grounds Services**

**\$60,825.00**

**General Fund (10)**

2640 Care and Upkeep of Equipment Services	<u>Elementary</u>	<u>Secondary</u>	<u>Federal</u>	<u>Total</u>
<b>100 Personnel Services – Salaries</b>				
100 Personnel Services – Salaries				5,325.00
<b>Total Personnel Services – Salaries</b>				<b>\$5,325.00</b>
<b>200 Personnel Services – Employee Benefits</b>				
220 Social Security Contributions				618.57
230 PSERS Retirement Contributions				1,825.96
250 Unemployment Compensation				49.33
260 Workers' Compensation				25.71
<b>Total Personnel Services – Employee Benefits</b>				<b>\$2,519.57</b>
<b>400 Purchased Property Services</b>				
430 Repairs and Maintenance Services				14,024.44
<b>Total Purchased Property Services</b>				<b>\$14,024.44</b>
<b>Total 2640 Care and Upkeep of Equipment Services</b>				<b>\$21,869.01</b>

**General Fund (10)**

	<u>Elementary</u>	<u>Secondary</u>	<u>Federal</u>	<u>Total</u>
<b>2650 Vehicle Operation and Maintenance Services (Other Than Student Transportation Vehicles)</b>				
<b>400 <u>Purchased Property Services</u></b>				
430 Repairs and Maintenance Services				4,350.37
<b>Total Purchased Property Services</b>				<b>\$4,350.37</b>
<b>600 <u>Supplies</u></b>				
620 Energy				18,428.40
<b>Total Supplies</b>				<b>\$18,428.40</b>
<b>Total 2650 Vehicle Operation and Maintenance Services (Other Than Student Transportation Vehicles)</b>				<b>\$22,778.77</b>

**General Fund (10)**

	<u>Elementary</u>	<u>Secondary</u>	<u>Federal</u>	<u>Total</u>
<b>2660 Safety and Security Services</b>				
<b>100 Personnel Services – Salaries</b>				
100 Personnel Services – Salaries				326,119.92
<b>Total Personnel Services – Salaries</b>				<b>\$326,119.92</b>
<b>200 Personnel Services – Employee Benefits</b>				
220 Social Security Contributions				24,946.24
230 PSERS Retirement Contributions				102,267.30
250 Unemployment Compensation				4,059.82
260 Workers' Compensation				(1,829.82)
<b>Total Personnel Services – Employee Benefits</b>				<b>\$129,443.54</b>
<b>300 Purchased Professional and Technical Services</b>				
330 Other Professional Services				4,264.12
340 Technical Services				698.44
<b>Total Purchased Professional and Technical Services</b>				<b>\$4,962.56</b>
<b>400 Purchased Property Services</b>				
430 Repairs and Maintenance Services				14,322.08
<b>Total Purchased Property Services</b>				<b>\$14,322.08</b>
<b>500 Other Purchased Services</b>				
580 Travel				2,323.18
<b>Total Other Purchased Services</b>				<b>\$2,323.18</b>
<b>600 Supplies</b>				
610 General Supplies	9,659.99	9,281.17		18,941.16
<b>Total Supplies</b>	<b>\$9,659.99</b>	<b>\$9,281.17</b>		<b>\$18,941.16</b>
<b>800 Other Objects</b>				
810 Dues and Fees				2,270.53
<b>Total Other Objects</b>				<b>\$2,270.53</b>
<b>Total 2660 Safety and Security Services</b>	<b>\$9,659.99</b>	<b>\$9,281.17</b>		<b>\$498,382.97</b>

General Fund (10)

	<u>Elementary</u>	<u>Secondary</u>	<u>Federal</u>	<u>Total</u>
<b>2690 Other Operation and Maintenance of Plant Services</b>				
<b>300 <u>Purchased Professional and Technical Services</u></b>				
329 Professional Educational Services – Other				17,085.00
<b>Total Purchased Professional and Technical Services</b>				<b>\$17,085.00</b>
<b>Total 2690 Other Operation and Maintenance of Plant Services</b>				<b>\$17,085.00</b>

General Fund (10)

	<u>Elementary</u>	<u>Secondary</u>	<u>Federal</u>	<u>Total</u>
<b>2700 Student Transportation Services</b>				
<b>100 Personnel Services – Salaries</b>				
100 Personnel Services – Salaries				1,736,977.53
<b>Total Personnel Services – Salaries</b>				<b>\$1,736,977.53</b>
<b>200 Personnel Services – Employee Benefits</b>				
210 Group Insurance – Contracted Provider				151,696.01
220 Social Security Contributions				128,136.61
230 PSERS Retirement Contributions				579,841.31
240 Tuition Reimbursement				5,980.19
250 Unemployment Compensation				18,826.24
260 Workers' Compensation				6,580.16
<b>Total Personnel Services – Employee Benefits</b>				<b>\$891,060.52</b>
<b>300 Purchased Professional and Technical Services</b>				
330 Other Professional Services				2,052.00
<b>Total Purchased Professional and Technical Services</b>				<b>\$2,052.00</b>
<b>400 Purchased Property Services</b>				
430 Repairs and Maintenance Services				26,295.18
<b>Total Purchased Property Services</b>				<b>\$26,295.18</b>
<b>500 Other Purchased Services</b>				
516 Student Transportation Services From the IU				110,421.50
522 Automotive Liability Insurance				44,348.00
530 Communications				21,690.00
580 Travel				657.24
<b>Total Other Purchased Services</b>				<b>\$177,116.74</b>
<b>600 Supplies</b>				
610 General Supplies				171,925.69
620 Energy				222,108.65
<b>Total Supplies</b>				<b>\$394,034.34</b>
<b>Total 2700 Student Transportation Services</b>				<b>\$3,227,536.31</b>

General Fund (10)

2710 Supervision of Student Transportation Services

Elementary

Secondary

Federal

Total

100 Personnel Services – Salaries

100 Personnel Services – Salaries

158,616.38

**Total Personnel Services – Salaries**

**\$158,616.38**

200 Personnel Services – Employee Benefits

210 Group Insurance – Contracted Provider

45,607.01

220 Social Security Contributions

11,647.97

230 PSERS Retirement Contributions

52,370.77

250 Unemployment Compensation

292.88

260 Workers' Compensation

765.62

**Total Personnel Services – Employee Benefits**

**\$110,684.25**

500 Other Purchased Services

580 Travel

657.24

**Total Other Purchased Services**

**\$657.24**

**Total 2710 Supervision of Student Transportation Services**

**\$269,957.87**

General Fund (10)

2711 Supervision of Student Transportation Services – Head of Component

Elementary

Secondary

Federal

Total

100 Personnel Services – Salaries

100 Personnel Services – Salaries

158,616.38

**Total Personnel Services – Salaries**

**\$158,616.38**

200 Personnel Services – Employee Benefits

210 Group Insurance – Contracted Provider

45,607.01

220 Social Security Contributions

11,647.97

230 PSERS Retirement Contributions

52,370.77

250 Unemployment Compensation

292.88

260 Workers' Compensation

765.62

**Total Personnel Services – Employee Benefits**

**\$110,684.25**

500 Other Purchased Services

580 Travel

657.24

**Total Other Purchased Services**

**\$657.24**

**Total 2711 Supervision of Student Transportation Services – Head of Component**

**\$269,957.87**



General Fund (10)

2720 Vehicle Operation Services

Elementary

Secondary

Federal

Total

100 Personnel Services – Salaries

100 Personnel Services – Salaries

1,033,295.36

**Total Personnel Services – Salaries**

**\$1,033,295.36**

200 Personnel Services – Employee Benefits

210 Group Insurance – Contracted Provider

36,215.95

220 Social Security Contributions

76,194.25

230 PSERS Retirement Contributions

344,229.64

250 Unemployment Compensation

16,473.04

260 Workers' Compensation

4,990.08

**Total Personnel Services – Employee Benefits**

**\$478,102.96**

**Total 2720 Vehicle Operation Services**

**\$1,511,398.32**

General Fund (10)

2740 Vehicle Servicing and Maintenance Services

Elementary

Secondary

Federal

Total

100 Personnel Services – Salaries

100 Personnel Services – Salaries

169,949.41

**Total Personnel Services – Salaries**

**\$169,949.41**

200 Personnel Services – Employee Benefits

210 Group Insurance – Contracted Provider

56,725.14

220 Social Security Contributions

12,633.66

230 PSERS Retirement Contributions

58,275.49

250 Unemployment Compensation

248.78

260 Workers' Compensation

824.46

**Total Personnel Services – Employee Benefits**

**\$128,707.53**

300 Purchased Professional and Technical Services

330 Other Professional Services

2,052.00

**Total Purchased Professional and Technical Services**

**\$2,052.00**

400 Purchased Property Services

430 Repairs and Maintenance Services

26,295.18

**Total Purchased Property Services**

**\$26,295.18**

500 Other Purchased Services

516 Student Transportation Services From the IU

110,421.50

522 Automotive Liability Insurance

44,348.00

530 Communications

21,690.00

**Total Other Purchased Services**

**\$176,459.50**

600 Supplies

610 General Supplies

171,925.69

620 Energy

222,108.65

**Total Supplies**

**\$394,034.34**

**Total 2740 Vehicle Servicing and Maintenance Services**

**\$897,497.96**

General Fund (10)

2750 Nonpublic Transportation

Elementary

Secondary

Federal

Total

100 Personnel Services – Salaries

100 Personnel Services – Salaries

375,116.38

**Total Personnel Services – Salaries**

**\$375,116.38**

200 Personnel Services – Employee Benefits

210 Group Insurance – Contracted Provider

13,147.91

220 Social Security Contributions

27,660.73

230 PSERS Retirement Contributions

124,965.41

240 Tuition Reimbursement

5,980.19

250 Unemployment Compensation

1,811.54

**Total Personnel Services – Employee Benefits**

**\$173,565.78**

**Total 2750 Nonpublic Transportation**

**\$548,682.16**

**General Fund (10)**

	<u>Elementary</u>	<u>Secondary</u>	<u>Federal</u>	<u>Total</u>
<b>2800 Support Services – Central</b>				
<b>100 Personnel Services – Salaries</b>				
100 Personnel Services – Salaries				311,823.00
<b>Total Personnel Services – Salaries</b>				<b>\$311,823.00</b>
<b>200 Personnel Services – Employee Benefits</b>				
210 Group Insurance – Contracted Provider				67,621.81
220 Social Security Contributions				23,075.07
230 PSERS Retirement Contributions				106,000.61
250 Unemployment Compensation				720.42
260 Workers' Compensation				1,505.37
<b>Total Personnel Services – Employee Benefits</b>				<b>\$198,923.28</b>
<b>300 Purchased Professional and Technical Services</b>				
330 Other Professional Services				24,946.42
340 Technical Services				20,679.64
<b>Total Purchased Professional and Technical Services</b>				<b>\$45,626.06</b>
<b>400 Purchased Property Services</b>				
430 Repairs and Maintenance Services				64,906.24
<b>Total Purchased Property Services</b>				<b>\$64,906.24</b>
<b>500 Other Purchased Services</b>				
580 Travel				2,532.34
<b>Total Other Purchased Services</b>				<b>\$2,532.34</b>
<b>600 Supplies</b>				
610 General Supplies			2,447.93	3,737.76
640 Books and Periodicals			21,895.00	396,451.68
<b>Total Supplies</b>			<b>\$24,342.93</b>	<b>\$400,189.44</b>
<b>700 Property</b>				
752 Capital Equipment – Original and Additional				32.07
758 Capitalized Technology Software - Original				80,931.21
768 Capitalized Technology Software - Replacement				42,027.48
<b>Total Property</b>				<b>\$122,990.76</b>
<b>Total 2800 Support Services – Central</b>			<b>\$24,342.93</b>	<b>\$1,146,991.12</b>

LEA : 103027503 Plum Borough SD

Printed 11/18/2020 1:45:21 PM

**General Fund (10)**

	<u>Elementary</u>	<u>Secondary</u>	<u>Federal</u>	<u>Total</u>
<b>2840 Data Processing Services</b>				
<b>100 Personnel Services – Salaries</b>				
100 Personnel Services – Salaries				311,823.00
<b>Total Personnel Services – Salaries</b>				<b>\$311,823.00</b>
<b>200 Personnel Services – Employee Benefits</b>				
210 Group Insurance – Contracted Provider				67,621.81
220 Social Security Contributions				23,075.07
230 PSERS Retirement Contributions				106,000.61
250 Unemployment Compensation				720.42
260 Workers' Compensation				1,505.37
<b>Total Personnel Services – Employee Benefits</b>				<b>\$198,923.28</b>
<b>300 Purchased Professional and Technical Services</b>				
330 Other Professional Services				24,946.42
340 Technical Services				20,679.64
<b>Total Purchased Professional and Technical Services</b>				<b>\$45,626.06</b>
<b>400 Purchased Property Services</b>				
430 Repairs and Maintenance Services				64,906.24
<b>Total Purchased Property Services</b>				<b>\$64,906.24</b>
<b>500 Other Purchased Services</b>				
580 Travel				2,532.34
<b>Total Other Purchased Services</b>				<b>\$2,532.34</b>
<b>600 Supplies</b>				
610 General Supplies			2,447.93	3,737.31
640 Books and Periodicals			21,895.00	396,451.68
<b>Total Supplies</b>			<b>\$24,342.93</b>	<b>\$400,188.99</b>
<b>700 Property</b>				
752 Capital Equipment – Original and Additional				32.07
758 Capitalized Technology Software - Original				80,931.21
768 Capitalized Technology Software - Replacement				42,027.48
<b>Total Property</b>				<b>\$122,990.76</b>
<b>Total 2840 Data Processing Services</b>			<b>\$24,342.93</b>	<b>\$1,146,990.67</b>

LEA : 103027503 Plum Borough SD

Printed 11/18/2020 1:45:21 PM

General Fund (10)

2890 Other Support Services Central

Elementary

Secondary

Federal

Total

600 Supplies

610 General Supplies

0.45

**Total Supplies**

**\$0.45**

**Total 2890 Other Support Services Central**

**\$0.45**

LEA : 103027503 Plum Borough SD

Printed 11/18/2020 1:45:21 PM

General Fund (10)

2900 Other Support Services

Elementary

Secondary

Federal

Total

500 Other Purchased Services

595 IU Payments By Withholding

41,103.92

**Total Other Purchased Services**

**\$41,103.92**

**Total 2900 Other Support Services**

**\$41,103.92**

General Fund (10)

2910 Support Services Not Listed Elsewhere In the 2000 Series

Elementary

Secondary

Federal

Total

500 Other Purchased Services

595 IU Payments By Withholding

41,103.92

**Total Other Purchased Services**

**\$41,103.92**

**Total 2910 Support Services Not Listed Elsewhere In the 2000 Series**

**\$41,103.92**



**General Fund (10)**

**3000 Operation of Non-Instructional Services**

**Total**

**100 Personnel Services – Salaries**

100 Personnel Services – Salaries 687,853.24

**Total Personnel Services – Salaries \$687,853.24**

**200 Personnel Services – Employee Benefits**

210 Group Insurance – Contracted Provider 22,605.60

220 Social Security Contributions 75,483.29

230 PSERS Retirement Contributions 324,814.56

250 Unemployment Compensation 9,488.84

260 Workers' Compensation 7,283.41

**Total Personnel Services – Employee Benefits \$439,675.70**

**300 Purchased Professional and Technical Services**

330 Other Professional Services 58,880.64

**Total Purchased Professional and Technical Services \$58,880.64**

**400 Purchased Property Services**

430 Repairs and Maintenance Services 11,323.82

**Total Purchased Property Services \$11,323.82**

**500 Other Purchased Services**

520 Insurance – General 13,783.00

580 Travel 3,872.85

**Total Other Purchased Services \$17,655.85**

**600 Supplies**

610 General Supplies 70,747.47

**Total Supplies \$70,747.47**

**700 Property**

762 Capitalized Equipment - Replacement 30,384.35

**Total Property \$30,384.35**

**800 Other Objects**

810 Dues and Fees 1,975.00

890 Miscellaneous Expenditures 8,000.00

**Total Other Objects \$9,975.00**

**Total 3000 Operation of Non-Instructional Services \$1,326,496.07**

**General Fund (10)**

**3200 Student Activities**

	<u>Elementary</u>	<u>Secondary</u>	<u>Federal</u>	<u>Total</u>
<b>100 Personnel Services – Salaries</b>				
100 Personnel Services – Salaries				538,477.64
<b>Total Personnel Services – Salaries</b>				<b>\$538,477.64</b>
<b>200 Personnel Services – Employee Benefits</b>				
210 Group Insurance – Contracted Provider				19,858.72
220 Social Security Contributions				40,037.22
230 PSERS Retirement Contributions				170,928.13
250 Unemployment Compensation				9,667.05
260 Workers' Compensation				2,553.67
<b>Total Personnel Services – Employee Benefits</b>				<b>\$243,044.79</b>
<b>300 Purchased Professional and Technical Services</b>				
330 Other Professional Services				50,794.40
<b>Total Purchased Professional and Technical Services</b>				<b>\$50,794.40</b>
<b>400 Purchased Property Services</b>				
430 Repairs and Maintenance Services				11,323.82
<b>Total Purchased Property Services</b>				<b>\$11,323.82</b>
<b>500 Other Purchased Services</b>				
520 Insurance – General				13,783.00
580 Travel				1,813.31
<b>Total Other Purchased Services</b>				<b>\$15,596.31</b>
<b>600 Supplies</b>				
610 General Supplies				64,977.96
<b>Total Supplies</b>				<b>\$64,977.96</b>
<b>700 Property</b>				
762 Capitalized Equipment - Replacement				30,384.35
<b>Total Property</b>				<b>\$30,384.35</b>
<b>800 Other Objects</b>				
810 Dues and Fees				1,975.00
890 Miscellaneous Expenditures				8,000.00
<b>Total Other Objects</b>				<b>\$9,975.00</b>
<b>Total 3200 Student Activities</b>				<b>\$964,574.27</b>

**General Fund (10)**

**3300 Community Services**

**100 Personnel Services – Salaries**

	<u>Elementary</u>	<u>Secondary</u>	<u>Federal</u>	<u>Total</u>
100 Personnel Services – Salaries			89,625.36	149,375.60
<b>Total Personnel Services – Salaries</b>			<b>\$89,625.36</b>	<b>\$149,375.60</b>

**Total Personnel Services – Salaries**

**200 Personnel Services – Employee Benefits**

210 Group Insurance – Contracted Provider				2,746.88
220 Social Security Contributions				35,446.07
230 PSERS Retirement Contributions				153,886.43
250 Unemployment Compensation				(178.21)
260 Workers' Compensation				4,729.74
<b>Total Personnel Services – Employee Benefits</b>				<b>\$196,630.91</b>

**Total Personnel Services – Employee Benefits**

**300 Purchased Professional and Technical Services**

330 Other Professional Services				8,086.24
<b>Total Purchased Professional and Technical Services</b>				<b>\$8,086.24</b>

**Total Purchased Professional and Technical Services**

**500 Other Purchased Services**

580 Travel				2,059.54
<b>Total Other Purchased Services</b>				<b>\$2,059.54</b>

**Total Other Purchased Services**

**600 Supplies**

610 General Supplies				5,769.51
<b>Total Supplies</b>				<b>\$5,769.51</b>

**Total Supplies**

<b>Total 3300 Community Services</b>			<b>\$89,625.36</b>	<b>\$361,921.80</b>
--------------------------------------	--	--	--------------------	---------------------

**General Fund (10)**

**5000 Other Expenditures and Financing Uses**

**Total**

**800 Other Objects**

830 Interest	4,614,245.04
880 Refunds of Prior Years' Receipts	5,197.69

<b>Total Other Objects</b>	<b>\$4,619,442.73</b>
----------------------------	-----------------------

**900 Other Uses of Funds**

910 Redemption of Principal	48,412,408.30
939 Other Fund Transfers	3,470,322.00

<b>Total Other Uses of Funds</b>	<b>\$51,882,730.30</b>
----------------------------------	------------------------

<b>Total 5000 Other Expenditures and Financing Uses</b>	<b>\$56,502,173.03</b>
---	------------------------

General Fund (10)

5100 Debt Service / Other Expenditures and Financing Uses	<u>Elementary</u>	<u>Secondary</u>	<u>Federal</u>	<u>Total</u>
<b>800 Other Objects</b>				
830 Interest				4,614,245.04
880 Refunds of Prior Years' Receipts				5,197.69
<b>Total Other Objects</b>				<b>\$4,619,442.73</b>
<b>900 Other Uses of Funds</b>				
910 Redemption of Principal				48,412,408.30
<b>Total Other Uses of Funds</b>				<b>\$48,412,408.30</b>
<b>Total 5100 Debt Service / Other Expenditures and Financing Uses</b>				<b>\$53,031,851.03</b>

LEA : 103027503 Plum Borough SD

Printed 11/18/2020 1:45:49 PM

General Fund (10)

5110 Debt Service

Elementary

Secondary

Federal

Total

800 Other Objects

830 Interest

3,760,379.04

**Total Other Objects**

**\$3,760,379.04**

900 Other Uses of Funds

910 Redemption of Principal

4,647,408.30

**Total Other Uses of Funds**

**\$4,647,408.30**

**Total 5110 Debt Service**

**\$8,407,787.34**

LEA : 103027503 Plum Borough SD

Printed 11/18/2020 1:45:49 PM

General Fund (10)

5120 Debt Service – Refunded Bonds

Elementary

Secondary

Federal

Total

800 Other Objects

830 Interest 853,866.00

**Total Other Objects**

**\$853,866.00**

900 Other Uses of Funds

910 Redemption of Principal 43,765,000.00

**Total Other Uses of Funds**

**\$43,765,000.00**

**Total 5120 Debt Service – Refunded Bonds**

**\$44,618,866.00**

General Fund (10)

5130 Refund of Prior Year Revenues / Receipts

Elementary

Secondary

Federal

Total

800 Other Objects

880 Refunds of Prior Years' Receipts

5,197.69

**Total Other Objects**

**\$5,197.69**

**Total 5130 Refund of Prior Year Revenues / Receipts**

**\$5,197.69**



General Fund (10)

	<u>Elementary</u>	<u>Secondary</u>	<u>Federal</u>	<u>Total</u>
<b>5200 Interfund Transfers – Out</b>				
<b>900 <u>Other Uses of Funds</u></b>				
939 Other Fund Transfers				3,470,322.00
<b>Total Other Uses of Funds</b>				<b>\$3,470,322.00</b>
<b>Total 5200 Interfund Transfers – Out</b>				<b>\$3,470,322.00</b>

LEA : 103027503 Plum Borough SD

Printed 11/18/2020 1:45:49 PM

General Fund (10)

5230 Capital Projects Fund Transfers

Elementary

Secondary

Federal

Total

900 Other Uses of Funds

939 Other Fund Transfers

3,470,322.00

**Total Other Uses of Funds**

**\$3,470,322.00**

**Total 5230 Capital Projects Fund Transfers**

**\$3,470,322.00**

LEA : 103027503 Plum Borough SD

Printed 11/18/2020 1:45:26 PM

**Other Capital Projects Fund (39)**

**2000 Support Services**

**700 Property**

752 Capital Equipment – Original and Additional

**Total**

535,166.00

**Total Property** **\$535,166.00**

**Total 2000 Support Services** **\$535,166.00**

LEA : 103027503 Plum Borough SD

Printed 11/18/2020 1:45:26 PM

Other Capital Projects Fund (39)

2700 Student Transportation Services

Elementary

Secondary

Federal

Total

700 Property

752 Capital Equipment – Original and Additional

412,846.00

**Total Property**

**\$412,846.00**

**Total 2700 Student Transportation Services**

**\$412,846.00**

Other Capital Projects Fund (39)

2740 Vehicle Servicing and Maintenance Services

Elementary

Secondary

Federal

Total

700 Property

752 Capital Equipment – Original and Additional

412,846.00

**Total Property**

**\$412,846.00**

**Total 2740 Vehicle Servicing and Maintenance Services**

**\$412,846.00**

LEA : 103027503 Plum Borough SD

Printed 11/18/2020 1:45:26 PM

Other Capital Projects Fund (39)

2800 Support Services – Central

Elementary

Secondary

Federal

Total

700 Property

752 Capital Equipment – Original and Additional

122,320.00

**Total Property**

**\$122,320.00**

**Total 2800 Support Services – Central**

**\$122,320.00**

LEA : 103027503 Plum Borough SD

Printed 11/18/2020 1:45:26 PM

Other Capital Projects Fund (39)

2890 Other Support Services Central

Elementary

Secondary

Federal

Total

700 Property

752 Capital Equipment – Original and Additional

122,320.00

<b>Total Property</b>				<b>\$122,320.00</b>
<b>Total 2890 Other Support Services Central</b>				<b>\$122,320.00</b>

LEA : 103027503 Plum Borough SD

Printed 11/18/2020 1:45:38 PM

**Other Capital Projects Fund (39)**

**3000 Operation of Non-Instructional Services**

**Total**

**400 Purchased Property Services**

490 Other Purchased Property Services

42,902.00

**Total Purchased Property Services**

**\$42,902.00**

**Total 3000 Operation of Non-Instructional Services**

**\$42,902.00**



LEA : 103027503 Plum Borough SD

Printed 11/18/2020 1:45:38 PM

Other Capital Projects Fund (39)

3200 Student Activities

400 Purchased Property Services

490 Other Purchased Property Services

Elementary

Secondary

Federal

Total

**Total Purchased Property Services**

42,902.00

**\$42,902.00**

**Total 3200 Student Activities**

**\$42,902.00**

**Other Capital Projects Fund (39)**

**4000 Facilities Acquisition, Construction and Improvement Services**

**Total**

**300 Purchased Professional and Technical Services**

330 Other Professional Services 706,666.00

**Total Purchased Professional and Technical Services \$706,666.00**

**600 Supplies**

610 General Supplies 372,506.00

**Total Supplies \$372,506.00**

**700 Property**

762 Capitalized Equipment - Replacement 726,919.00

**Total Property \$726,919.00**

**Total 4000 Facilities Acquisition, Construction and Improvement Services \$1,806,091.00**

LEA : 103027503 Plum Borough SD

Printed 11/18/2020 1:45:44 PM

**Other Capital Projects Fund (39)**

	<u>Elementary</u>	<u>Secondary</u>	<u>Federal</u>	<u>Total</u>
<b>4600 Existing Building Improvement Services</b>				
<b>300 <u>Purchased Professional and Technical Services</u></b>				
330 Other Professional Services				706,666.00
<b>Total Purchased Professional and Technical Services</b>				<b>\$706,666.00</b>
<b>600 <u>Supplies</u></b>				
610 General Supplies				372,506.00
<b>Total Supplies</b>				<b>\$372,506.00</b>
<b>700 <u>Property</u></b>				
762 Capitalized Equipment - Replacement				726,919.00
<b>Total Property</b>				<b>\$726,919.00</b>
<b>Total 4600 Existing Building Improvement Services</b>				<b>\$1,806,091.00</b>

	<u>General Fund(10)</u>	<u>Student Sponsored Activity Fund(21)</u>	<u>Public Purpose Trust(27)</u>	<u>Other Compt Approved (28)</u>	<u>Athletic / Activity(29)</u>
<b>1000 Instruction</b>					
1100 Regular Programs - Elementary / Secondary	28,792,931.93				
1200 Special Programs - Elementary / Secondary	6,368,219.39				
1300 Vocational Education	637,373.81				
1400 Other Instructional Programs - Elementary / Secondary	14,332.85				
<b>Total Instruction</b>	<b>\$35,812,857.98</b>				
<b>2000 Support Services</b>					
2100 Support Services - Students	1,820,065.58				
2200 Support Services - Instructional Staff	684,865.86				
2300 Support Services - Administration	3,635,321.74				
2400 Support Services - Pupil Health	624,357.22				
2500 Support Services - Business	443,834.15				
2600 Operation and Maintenance of Plant Services	5,156,442.12				
2700 Student Transportation Services	3,227,536.31				
2800 Support Services - Central	1,146,991.12				
2900 Other Support Services	41,103.92				
<b>Total Support Services</b>	<b>\$16,780,518.02</b>				
<b>3000 Operation of Non-Instructional Services</b>					
3200 Student Activities	964,574.27				
3300 Community Services	361,921.80				
<b>Total Operation of Non-Instructional Services</b>	<b>\$1,326,496.07</b>				
<b>4000 Facilities Acquisition, Construction and Improvement Services</b>					
4600 Existing Building Improvement Services					
<b>Total Facilities Acquisition, Construction and Improvement Services</b>					
<b>5000 Other Expenditures and Financing Uses</b>					
5100 Debt Service / Other Expenditures and Financing Uses	53,031,851.03				
5200 Interfund Transfers - Out	3,470,322.00				
<b>Total Other Expenditures and Financing Uses</b>	<b>\$56,502,173.03</b>				
<b>TOTAL ACTUAL EXPENDITURES &amp; OTHER FINANCING USES</b>	<b>\$110,422,045.10</b>				

	<u>Capital Reserve (690. 1850)(31)</u>	<u>Capital Reserve (1431)(32)</u>	<u>Other Capital Projects Fund(39)</u>	<u>Debt Service(40)</u>	<u>Permanent(90)</u>
<b>1000 Instruction</b>					
1100 Regular Programs - Elementary / Secondary					
1200 Special Programs - Elementary / Secondary					
1300 Vocational Education					
1400 Other Instructional Programs - Elementary / Secondary					
<b>Total Instruction</b>					
<b>2000 Support Services</b>					
2100 Support Services - Students					
2200 Support Services - Instructional Staff					
2300 Support Services - Administration					
2400 Support Services - Pupil Health					
2500 Support Services - Business					
2600 Operation and Maintenance of Plant Services					
2700 Student Transportation Services			412,846.00		
2800 Support Services - Central			122,320.00		
2900 Other Support Services					
<b>Total Support Services</b>			<b>\$535,166.00</b>		
<b>3000 Operation of Non-Instructional Services</b>					
3200 Student Activities			42,902.00		
3300 Community Services					
<b>Total Operation of Non-Instructional Services</b>			<b>\$42,902.00</b>		
<b>4000 Facilities Acquisition, Construction and Improvement Services</b>					
4600 Existing Building Improvement Services			1,806,091.00		
<b>Total Facilities Acquisition, Construction and Improvement Services</b>			<b>\$1,806,091.00</b>		
<b>5000 Other Expenditures and Financing Uses</b>					
5100 Debt Service / Other Expenditures and Financing Uses					
5200 Interfund Transfers - Out					
<b>Total Other Expenditures and Financing Uses</b>					
<b>TOTAL ACTUAL EXPENDITURES &amp; OTHER FINANCING USES</b>			<b>\$2,384,159.00</b>		

LEA : 103027503 Plum Borough SD

Printed 11/18/2020 1:46:06 PM

**Total**

<b>1000 <u>Instruction</u></b>	
1100 Regular Programs - Elementary / Secondary	28,792,931.93
1200 Special Programs - Elementary / Secondary	6,368,219.39
1300 Vocational Education	637,373.81
1400 Other Instructional Programs - Elementary / Secondary	14,332.85
<b>Total Instruction</b>	<b>\$35,812,857.98</b>
<b>2000 <u>Support Services</u></b>	
2100 Support Services - Students	1,820,065.58
2200 Support Services - Instructional Staff	684,865.86
2300 Support Services - Administration	3,635,321.74
2400 Support Services - Pupil Health	624,357.22
2500 Support Services - Business	443,834.15
2600 Operation and Maintenance of Plant Services	5,156,442.12
2700 Student Transportation Services	3,640,382.31
2800 Support Services - Central	1,269,311.12
2900 Other Support Services	41,103.92
<b>Total Support Services</b>	<b>\$17,315,684.02</b>
<b>3000 <u>Operation of Non-Instructional Services</u></b>	
3200 Student Activities	1,007,476.27
3300 Community Services	361,921.80
<b>Total Operation of Non-Instructional Services</b>	<b>\$1,369,398.07</b>
<b>4000 <u>Facilities Acquisition, Construction and Improvement Services</u></b>	
4600 Existing Building Improvement Services	1,806,091.00
<b>Total Facilities Acquisition, Construction and Improvement Services</b>	<b>\$1,806,091.00</b>
<b>5000 <u>Other Expenditures and Financing Uses</u></b>	
5100 Debt Service / Other Expenditures and Financing Uses	53,031,851.03
5200 Interfund Transfers - Out	3,470,322.00
<b>Total Other Expenditures and Financing Uses</b>	<b>\$56,502,173.03</b>
<b>TOTAL ACTUAL EXPENDITURES &amp; OTHER FINANCING USES</b>	<b>\$112,806,204.10</b>

LEA : 103027503 Plum Borough SD

Printed 11/18/2020 1:46:23 PM

**PSERS Salary Data (Salary Data should relate to the General Fund only)**

<b>Amount Description</b>	<b>Amount</b>
Total Salary Base for salaries subject to PSERS withholding	27,791,003.42
Total Federally Funded salaries subject to PSERS withholding	261,610.08
	<hr/>

**Title I Expenditure Data**

<b>Amount Description</b>	<b>Amount</b>
Expenditures Funded with Current Title I Funds	312,412.11
Expenditures Funded with Carry over Title I Funds	
<b>Total Title I Expenditure Data</b>	<hr/> <b>\$312,412.11</b> <hr/>

**Benefits for Staff Relative to Collective Bargaining Agreements**

	<b>OBJECT</b>	<b>COVERED</b>	<b>NOT COVERED</b>	<b>TOTAL</b>
<b>10 General Fund</b>	<b>No Self Insurance data to report</b>			
	211 Medical Insurance	3,849,569.84		3,849,569.84
	212 Dental Insurance	290,446.65		290,446.65
	215 Eye Care Insurance	41,338.13		41,338.13
	216 Prescription Insurance			
	271 Self-Insurance Medical Benefits			
	272 Self-Insurance Dental Benefits			
	275 Self-Insurance Eye Care Benefits			
	276 Self-Insurance Prescription Benefits			
	<b>FUND TOTAL</b>		<b>\$4,181,354.62</b>	
<b>50 Enterprise Fund</b>	<b>No Self Insurance data to report</b>			
	211 Medical Insurance			
	212 Dental Insurance			
	215 Eye Care Insurance			
	216 Prescription Insurance			
	271 Self-Insurance Medical Benefits			
	272 Self-Insurance Dental Benefits			
	275 Self-Insurance Eye Care Benefits			
	276 Self-Insurance Prescription Benefits			
	<b>FUND TOTAL</b>			
<b>60 Internal Service Fund</b>	<b>No Self Insurance data to report</b>			
	211 Medical Insurance			
	212 Dental Insurance			
	215 Eye Care Insurance			
	216 Prescription Insurance			
	271 Self-Insurance Medical Benefits			
	272 Self-Insurance Dental Benefits			
	275 Self-Insurance Eye Care Benefits			
	276 Self-Insurance Prescription Benefits			
	<b>FUND TOTAL</b>			
<b>Total of All Funds</b>		<b>\$4,181,354.62</b>		<b>\$4,181,354.62</b>



LEA : 103027503 Plum Borough SD

Printed 11/18/2020 1:46:38 PM

Function	Special Education (Prior Year)	Nonspecial Education (Prior Year)	Total (Prior Year)	Special Education (Current Year)	Nonspecial Education (Current Year)	Total (Current Year)
2120 Guidance Services	612,727.38	612,727.39	1,225,454.77	610,942.22	610,942.22	1,221,884.44
2140 Psychological Services	464,477.41		464,477.41	452,054.00		452,054.00
2150 Speech Pathology and Audiology Services						
2160 Social Work Services						
2260 Instruction and Curriculum Development Services						
2350 Legal and Accounting Services	54,043.28	126,100.98	180,144.26	26,053.01	60,790.38	86,843.39
2420 Medical Services	17,417.37	17,417.37	34,834.74	11,199.61	11,199.61	22,399.22
2440 Nursing Services	290,212.35	290,212.35	580,424.70	300,979.00	300,979.00	601,958.00
2700 Student Transportation Services	882,859.34	2,955,659.54	3,838,518.88	742,333.27	2,485,203.04	3,227,536.31
<b>Total</b>	<b>\$2,321,737.13</b>	<b>\$4,002,117.63</b>	<b>\$6,323,854.76</b>	<b>\$2,143,561.11</b>	<b>\$3,469,114.25</b>	<b>\$5,612,675.36</b>

LEA : 103027503 Plum Borough SD

Printed 11/18/2020 1:46:48 PM

(PRINCIPAL AMOUNTS ONLY)

**GOVERNMENTAL FUNDS/ ACTIVITIES**

	Short-Term Borrowing	General Obligation Bonds/Notes	Authority Building Obligations	Other Long-Term Debt	Other Post-Employment Benefits (OPEB)	Compensated Absences	Net Pension Liability	Total
1. Debt at Beginning of Fiscal Year		109,775,000.00		763,884.00	16,746,681.00	1,031,132.00	105,224,000.00	233,540,697.00
2. Additional Debt Incurred During Year		48,565,000.00			705,211.00	266,676.00		49,536,887.00
3. Retirements and Repayments		48,205,000.00		207,408.00	341,000.00	146,042.00	12,206,000.00	61,105,450.00
4. Debt at End of Fiscal Year		110,135,000.00		556,476.00	17,110,892.00	1,151,766.00	93,018,000.00	221,972,134.00
5. Accreted Interest at End Of Fiscal Year								
6. Total Debt and Accreted Interest		110,135,000.00		556,476.00	17,110,892.00	1,151,766.00	93,018,000.00	221,972,134.00
7. Current Portion P&I - Due within 1 year		8,280,640.00		221,520.00				8,502,160.00
8. Interest Paid during current fiscal year		4,607,545.00		14,112.00				4,621,657.00

(PRINCIPAL AMOUNTS ONLY)

**PROPRIETARY FUNDS**

	Short-Term Borrowing	General Obligation Bonds/Notes	Authority Building Obligations	Other Long-Term Debt	Other Post-Employment Benefits (OPEB)	Compensated Absences	Net Pension Liability	Total
1. Debt at Beginning of Fiscal Year					98,000.00	19,765.00	2,259,000.00	2,376,765.00
2. Additional Debt Incurred During Year								
3. Retirements and Repayments					7,000.00	2,892.00	262,000.00	271,892.00
4. Debt at End of Fiscal Year					91,000.00	16,873.00	1,997,000.00	2,104,873.00
5. Accreted Interest at End Of Fiscal Year								
6. Total Debt and Accreted Interest					91,000.00	16,873.00	1,997,000.00	2,104,873.00
7. Current Portion P&I - Due within 1 year								
8. Interest Paid during current fiscal year								

**Total Principal and Interest Payments Made by Your School - All Funds**

Function	Fund		Principal (910)	Principal (920)	Interest (830)	Total (Principal +Interest)	Misc Other Uses (990)
5110	10	General Fund	4,647,408.30		3,760,379.04	8,407,787.34	
5110	20	Special Revenue Funds					
5110	30	Capital Projects Funds					
5110	40	Debt Service Fund					
5110	90	Permanent Fund					
5120	10	General Fund	43,765,000.00		853,866.00	44,618,866.00	
5120	20	Special Revenue Funds					
5120	30	Capital Projects Funds					
5120	40	Debt Service Fund					

<b>Total Debt Payments - Governmental Funds</b>			<b>\$48,412,408.30</b>		<b>\$4,614,245.04</b>	<b>\$53,026,653.34</b>	
---	--	--	------------------------	--	-----------------------	------------------------	--

Function	Fund		Principal (910)	Principal (920)	Interest (830)	Total (Principal +Interest)
5110	50	Enterprise Fund				
5110	60	Internal Service Fund				
5120	50	Enterprise Fund				
5120	60	Internal Service Fund				

<b>Total Debt Payments - Proprietary Funds</b>						
--	--	--	--	--	--	--

**Debt Details**  
**Governmental Funds/ Activities**

Debt Category	Debt Issue Date (MM/YYYY)	Principal Amounts Only			Debt at End of Fiscal Year	Current Portion Due Within One Year (Principal and Interest)	Interest Paid During Fiscal Year
		Debt at Beginning of Fiscal Year	Additions	Reductions / Repayments			
General Obligation Bonds/Notes – CAB	01/2020		22,730,000.00	340,000.00	22,390,000.00	913,115.00	118,764.00
General Obligation Bonds/Notes – CAB	01/2020		18,710,000.00		18,710,000.00	641,967.00	103,248.00
General Obligation Bonds/Notes – CAB	01/2020		7,125,000.00		7,125,000.00	633,412.00	30,044.00
General Obligation Bonds/Notes – CAB	11/2017	2,990,000.00		60,000.00	2,930,000.00	168,960.00	110,585.00
General Obligation Bonds/Notes – CAB	06/2017	2,500,000.00		95,000.00	2,405,000.00	180,345.00	82,295.00
General Obligation Bonds/Notes – CAB	10/2016	1,725,000.00		195,000.00	1,530,000.00	234,340.00	40,265.00
General Obligation Bonds/Notes – CAB	10/2016	4,310,000.00		420,000.00	3,890,000.00	559,828.00	140,943.00
General Obligation Bonds/Notes – CAB	11/2014	9,975,000.00		9,975,000.00			339,180.00
General Obligation Bonds/Notes – CAB	06/2013	28,960,000.00		390,000.00	28,570,000.00	1,489,394.00	1,100,294.00
General Obligation Bonds/Notes – CAB	06/2013	6,520,000.00		395,000.00	6,125,000.00	621,980.00	228,080.00
General Obligation Bonds/Notes – CAB	06/2013	5,750,000.00		1,830,000.00	3,920,000.00	2,023,160.00	192,860.00
General Obligation Bonds/Notes – CAB	06/2013	12,775,000.00		235,000.00	12,540,000.00	814,139.00	583,839.00
General Obligation Bonds/Notes – CAB	10/2012	7,480,000.00		7,480,000.00			204,214.00
General Obligation Bonds/Notes – CAB	12/2012	7,415,000.00		7,415,000.00			148,339.00
General Obligation Bonds/Notes – CAB	03/2010	19,375,000.00		19,375,000.00			1,184,595.00
Other Long Term Debt/Liabilities		763,884.00		207,408.00	556,476.00	221,520.00	14,112.00
Compensated Absences		1,031,132.00	266,676.00	146,042.00	1,151,766.00		
Other Post-Employment Benefits (OPEB)		16,746,681.00	705,211.00	341,000.00	17,110,892.00		
Net Pension Liability		105,224,000.00		12,206,000.00	93,018,000.00		
<b>Totals for Debt Entered:</b>		<b>\$233,540,697.00</b>	<b>\$49,536,887.00</b>	<b>\$61,105,450.00</b>	<b>\$221,972,134.00</b>	<b>\$8,502,160.00</b>	<b>\$4,621,657.00</b>

**Bond Details**  
**Proprietary Funds**

Debt Category	Debt Issue Date (MM/YYYY)	Principal Amounts Only			Debt at End of Fiscal Year	Current Portion Due Within One Year (Principal and Interest)	Interest Paid During Fiscal Year
		Debt at Beginning of Fiscal Year	Additions	Reductions / Repayments			
Compensated Absences		19,765.00		2,892.00	16,873.00		
Other Post-Employment Benefits (OPEB)		98,000.00		7,000.00	91,000.00		
Net Pension Liability		2,259,000.00		262,000.00	1,997,000.00		
<b>Totals for Debt Entered:</b>		<b>\$2,376,765.00</b>		<b>\$271,892.00</b>	<b>\$2,104,873.00</b>		

LEA : 103027503 Plum Borough SD

Printed 11/18/2020 1:46:48 PM

**Accreted Interest Detail**  
**Governmental Funds/ Activities**

Debt Category	Debt Issue Date (MM/YYYY)	Beginning Accreted Interest	Additions	Reductions	Ending Accreted Interest	Ending bond Principal	Ending Principal Plus Accreted Interest
General Obligation Bonds/Notes – CAB	01/2020					22,390,000.00	22,390,000.00
General Obligation Bonds/Notes – CAB	01/2020					18,710,000.00	18,710,000.00
General Obligation Bonds/Notes – CAB	01/2020					7,125,000.00	7,125,000.00
General Obligation Bonds/Notes – CAB	11/2017					2,930,000.00	2,930,000.00
General Obligation Bonds/Notes – CAB	06/2017					2,405,000.00	2,405,000.00
General Obligation Bonds/Notes – CAB	10/2016					1,530,000.00	1,530,000.00
General Obligation Bonds/Notes – CAB	10/2016					3,890,000.00	3,890,000.00
General Obligation Bonds/Notes – CAB	11/2014						
General Obligation Bonds/Notes – CAB	06/2013					28,570,000.00	28,570,000.00
General Obligation Bonds/Notes – CAB	06/2013					6,125,000.00	6,125,000.00
General Obligation Bonds/Notes – CAB	06/2013					3,920,000.00	3,920,000.00
General Obligation Bonds/Notes – CAB	06/2013					12,540,000.00	12,540,000.00
General Obligation Bonds/Notes – CAB	10/2012						
General Obligation Bonds/Notes – CAB	12/2012						
General Obligation Bonds/Notes – CAB	03/2010						
<b>Totals for Debt Entered:</b>						<b>\$110,135,000.00</b>	<b>\$110,135,000.00</b>

**General Fund (10)**

**Section 1: Tuition/Purchased Services as Reported within Expenditure Detail**

	Amount
Tuition Reported in General Fund Expenditures 1000-560	3,378,202.75
Purchased Services in General Fund Expenditures 1000-594 and 1000-597	

<b>Section 1 Total</b>	<b>\$3,378,202.75</b>
------------------------	-----------------------

**Section 2: Tuition Paid to Institution Types During Fiscal Year**

	Tuition Paid For Nonspecial Education	Tuition Paid For Special Education	Total
1 1306 Institutions			
2 Institutionalized Children's Programs			
3 Juveniles Incarcerated in Adult Facilities			
4 Residential Treatment Facilities			
5 Other Local Education Agencies		366,610.84	366,610.84
6 Brick and Mortar Charter Schools	16,419.65	535.99	16,955.64
7 Cyber Charter Schools	614,997.90	376,888.54	991,886.44
8 Career and Technology Centers	626,269.96		626,269.96
9 Approved Private Schools		1,053,711.12	1,053,711.12
10 PA Chartered Schools for the Deaf and Blind			
11 Private Residential Rehabilitative Institutions		73,242.67	73,242.67
12 Juvenile Detention Centers			
13 Special Program Jointures			
14 Other Tuition Not Included Elsewhere In This Section	191,158.58	58,367.50	249,526.08
<b>Section 2 Total</b>	<b>\$1,448,846.09</b>	<b>\$1,929,356.66</b>	<b>\$3,378,202.75</b>

1 .	<u>Student Transportation Services for Educational Field Trips</u>	22,434.00
2 .	<u>Student Transportation Services for Student Activities</u>	31,137.21
3 .	<u>Rental of Vehicles for Student Transportation Services</u>	
4 .	<u>Capital Reserve Funds</u>	

Include only district-owned transportation expenditures paid from State or local money.  
 DO NOT include federal expenditures or payments to contract service providers.  
 Contracted transportation services should not be recorded on this schedule.

**Food Service / Cafeteria Operations Fund (51)**

**3000 Operation of Non-Instructional Services**

**Total**

**100 Personnel Services – Salaries**

100 Personnel Services – Salaries 602,304.00

**Total Personnel Services – Salaries \$602,304.00**

**200 Personnel Services – Employee Benefits**

210 Group Insurance – Contracted Provider 65,621.00

220 Social Security Contributions 46,076.00

230 PSERS Retirement Contributions 198,760.00

250 Unemployment Compensation 3,312.00

260 Workers' Compensation 3,312.00

**Total Personnel Services – Employee Benefits \$317,081.00**

**300 Purchased Professional and Technical Services**

330 Other Professional Services 5,653.00

**Total Purchased Professional and Technical Services \$5,653.00**

**400 Purchased Property Services**

490 Other Purchased Property Services 31,430.00

**Total Purchased Property Services \$31,430.00**

**500 Other Purchased Services**

580 Travel 7,633.00

**Total Other Purchased Services \$7,633.00**

**600 Supplies**

610 General Supplies 702,682.00

**Total Supplies \$702,682.00**

**700 Property**

740 Depreciation 14,500.00

**Total Property \$14,500.00**

**800 Other Objects**

810 Dues and Fees 3,810.00

**Total Other Objects \$3,810.00**

**Total 3000 Operation of Non-Instructional Services \$1,685,093.00**



**Food Service / Cafeteria Operations Fund (51)**

	<u>Elementary</u>	<u>Secondary</u>	<u>Federal</u>	<u>Total</u>
<b>3100 Food Services</b>				
<b>100 Personnel Services – Salaries</b>				
100 Personnel Services – Salaries				602,304.00
<b>Total Personnel Services – Salaries</b>				<b>\$602,304.00</b>
<b>200 Personnel Services – Employee Benefits</b>				
210 Group Insurance – Contracted Provider				65,621.00
220 Social Security Contributions				46,076.00
230 PSERS Retirement Contributions				198,760.00
250 Unemployment Compensation				3,312.00
260 Workers' Compensation				3,312.00
<b>Total Personnel Services – Employee Benefits</b>				<b>\$317,081.00</b>
<b>300 Purchased Professional and Technical Services</b>				
330 Other Professional Services				5,653.00
<b>Total Purchased Professional and Technical Services</b>				<b>\$5,653.00</b>
<b>400 Purchased Property Services</b>				
490 Other Purchased Property Services				31,430.00
<b>Total Purchased Property Services</b>				<b>\$31,430.00</b>
<b>500 Other Purchased Services</b>				
580 Travel				7,633.00
<b>Total Other Purchased Services</b>				<b>\$7,633.00</b>
<b>600 Supplies</b>				
610 General Supplies				702,682.00
<b>Total Supplies</b>				<b>\$702,682.00</b>
<b>700 Property</b>				
740 Depreciation				14,500.00
<b>Total Property</b>				<b>\$14,500.00</b>
<b>800 Other Objects</b>				
810 Dues and Fees				3,810.00
<b>Total Other Objects</b>				<b>\$3,810.00</b>
<b>Total 3100 Food Services</b>				<b>\$1,685,093.00</b>

	<u>Food Service(51)</u>	<u>Child Care Operations(52)</u>	<u>Other Enterprise(58)</u>	<u>Internal Service(60)</u>	<u>Total</u>
<b>3000 <u>Operation of Non-Instructional Services</u></b>					
3100 Food Services	1,685,093.00				1,685,093.00
<b>Total Operation of Non-Instructional Services</b>	<b>\$1,685,093.00</b>				<b>\$1,685,093.00</b>
<b>TOTAL ACTUAL EXPENDITURES &amp; OTHER FINANCING USES</b>	<b>\$1,685,093.00</b>				<b>\$1,685,093.00</b>

LEA : 103027503 Plum Borough SD

Printed 11/18/2020 1:47:39 PM

Fund	School	School Number	Local Personnel	Local Nonpersonnel	State Personnel	State Nonpersonnel	Federal Personnel	Federal Nonpersonnel	Total	Explanation
10										
	Center El Sch	427	2,911,159.13	12,715.68	2,108,080.75	9,207.90	363,697.14	25,221.13	5,430,081.73	
	Holiday Park El Sch	8354	3,325,677.51	15,265.82	2,408,249.23	11,054.56			5,760,247.12	
	Oblock JHS	5105	3,851,230.45	53,154.07	2,788,822.05	38,240.88			6,731,447.45	
	Pivik El Sch	7193	3,571,000.17	14,814.60	2,585,896.67	10,727.82			6,182,439.26	
	Plum SHS	435	6,808,684.35	77,083.28	4,930,426.60	55,818.92			11,872,013.15	
<b>Total</b>			<b>20,467,751.61</b>	<b>173,033.45</b>	<b>14,821,475.30</b>	<b>125,050.08</b>	<b>363,697.14</b>	<b>25,221.13</b>	<b>35,976,228.71</b>	